

Product datasheet for **TA339432**

B4galt6 Rabbit Polyclonal Antibody

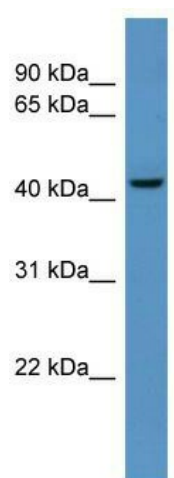
Product data:

Product Type:	Primary Antibodies
Applications:	WB
Recommended Dilution:	WB
Reactivity:	Mouse
Host:	Rabbit
Isotype:	IgG
Clonality:	Polyclonal
Immunogen:	The immunogen for anti-B4galt6 antibody: synthetic peptide corresponding to a region of Mouse. Synthetic peptide located within the following region: GGEDDDLWNRVHYAGYNVTRPEGDLGKYISIPHHHRGEVQFLGRYKLLRY
Formulation:	Liquid. Purified antibody supplied in 1x PBS buffer with 0.09% (w/v) sodium azide and 2% sucrose. <i>Note that this product is shipped as lyophilized powder to China customers.</i>
Concentration:	lot specific
Purification:	Protein A purified
Conjugation:	Unconjugated
Storage:	Store at -20°C as received.
Stability:	Stable for 12 months from date of receipt.
Predicted Protein Size:	45 kDa
Gene Name:	UDP-Gal:betaGlcNAc beta 1,4-galactosyltransferase, polypeptide 6
Database Link:	NP_062711 Entrez Gene 56386 Mouse Q9WVK5
Background:	Required for the biosynthesis of glycosphingolipids.
Synonyms:	b4Gal-T6; Beta4Gal-T6; beta4GalT-VI
Note:	Immunogen Sequence Homology: Dog: 100%; Pig: 100%; Rat: 100%; Horse: 100%; Human: 100%; Mouse: 100%; Bovine: 100%; Rabbit: 100%; Zebrafish: 93%; Guinea pig: 93%



[View online »](#)

Product images:



WB Suggested Anti-B4galt6 Antibody Titration:
0.2-1 ug/ml; ELISA Titer: 1: 62500; Positive
Control: Mouse Liver