

Product datasheet for **TA339430**

CCPG1 Rabbit Polyclonal Antibody

Product data:

Product Type:	Primary Antibodies
Applications:	WB
Recommended Dilution:	WB
Reactivity:	Human
Host:	Rabbit
Isotype:	IgG
Clonality:	Polyclonal
Immunogen:	The immunogen for anti-CCPG1 antibody: synthetic peptide directed towards the middle region of human CCPG1. Synthetic peptide located within the following region: TNLATENQYLRVSLEKEEKALSSLQEELNKLREQIRILEDKGTSTELVKE
Formulation:	Liquid. Purified antibody supplied in 1x PBS buffer with 0.09% (w/v) sodium azide and 2% sucrose. <i>Note that this product is shipped as lyophilized powder to China customers.</i>
Concentration:	lot specific
Purification:	Protein A purified
Conjugation:	Unconjugated
Storage:	Store at -20°C as received.
Stability:	Stable for 12 months from date of receipt.
Predicted Protein Size:	34 kDa
Gene Name:	cell cycle progression 1
Database Link:	NP_001191379 Entrez Gene 9236 Human Q9ULG6
Background:	CCPG1 acts as an assembly platform for Rho protein signaling complexes. It limits guanine nucleotide exchange activity of MCF2L toward RHOA, which results in an inhibition of both its transcriptional activation ability and its transforming activity. It does not inhibit activity of MCF2L toward CDC42, or activity of MCF2 toward either RHOA or CDC42. It may be involved in cell cycle regulation.



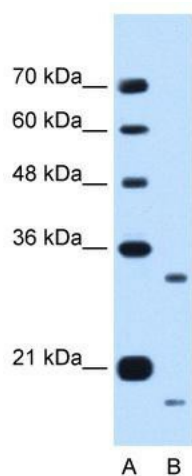
[View online »](#)

Synonyms: CPR8

Note: Immunogen Sequence Homology: Human: 100%; Pig: 93%; Horse: 93%; Bovine: 93%; Rabbit: 93%; Rat: 91%; Yeast: 91%; Dog: 86%; Mouse: 86%; Guinea pig: 86%

Protein Families: Transmembrane

Product images:



WB Suggested Anti-CCPG1 Antibody Titration:
0.2-1 ug/ml; Positive Control: HepG2 cell lysate