

## Product datasheet for **TA339423**

### NDUFC2 Rabbit Polyclonal Antibody

#### Product data:

Product Type:	Primary Antibodies
Applications:	WB
Recommended Dilution:	WB
Reactivity:	Human
Host:	Rabbit
Isotype:	IgG
Clonality:	Polyclonal
Immunogen:	The immunogen for anti-NDUFC2 antibody: synthetic peptide directed towards the N terminal of human NDUFC2. Synthetic peptide located within the following region: IARRNPEPLRFLPDEARSLPPPKLTDPRLLYIGFLGYCSGLIDNLIRRRP
Formulation:	Liquid. Purified antibody supplied in 1x PBS buffer with 0.09% (w/v) sodium azide and 2% sucrose. <i>Note that this product is shipped as lyophilized powder to China customers.</i>
Concentration:	lot specific
Purification:	Protein A purified
Conjugation:	Unconjugated
Storage:	Store at -20°C as received.
Stability:	Stable for 12 months from date of receipt.
Predicted Protein Size:	14 kDa
Gene Name:	NADH:ubiquinone oxidoreductase subunit C2
Database Link:	<a href="#">NP_004540</a> <a href="#">Entrez Gene 4718 Human</a> <a href="#">O95298</a>
Background:	Accessory subunit of the mitochondrial membrane respiratory chain NADH dehydrogenase (Complex I), that is believed not to be involved in catalysis. Complex I functions in the transfer of electrons from NADH to the respiratory chain. The immediate electron acceptor for the enzyme is believed to be ubiquinone.
Synonyms:	B14.5b; CI-B14.5b; HLC-1; NADHDH2



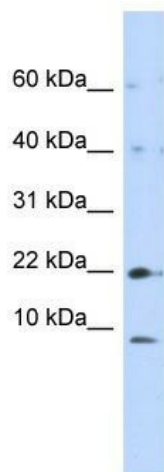
[View online »](#)

**Note:** Immunogen Sequence Homology: Dog: 100%; Pig: 100%; Human: 100%; Mouse: 100%; Bovine: 100%; Rabbit: 100%; Guinea pig: 100%; Rat: 92%

**Protein Families:** Transmembrane

**Protein Pathways:** Alzheimer's disease, Huntington's disease, Metabolic pathways, Oxidative phosphorylation, Parkinson's disease

### Product images:



WB Suggested Anti-NDUFC2 Antibody Titration: 0.2-1 ug/ml; ELISA Titer: 1: 62500; Positive Control: 293T cell lysate. NDUFC2 is supported by BioGPS gene expression data to be expressed in HEK293T