

## Product datasheet for **TA339419**

### Giantin (GOLGB1) Rabbit Polyclonal Antibody

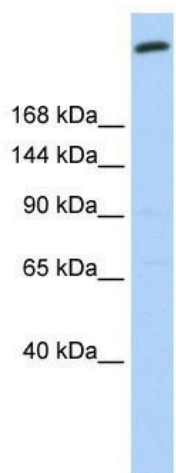
#### Product data:

Product Type:	Primary Antibodies
Applications:	IHC, WB
Recommended Dilution:	WB, IHC
Reactivity:	Human
Host:	Rabbit
Isotype:	IgG
Clonality:	Polyclonal
Immunogen:	The immunogen for anti-GOLGB1 antibody: synthetic peptide directed towards the N terminal of human GOLGB1. Synthetic peptide located within the following region: NKYIEEMKAQGGTVLPTEPQSEEQLSKHDKSSTEEEMEIEKIKHKLQEKE
Formulation:	Liquid. Purified antibody supplied in 1x PBS buffer with 0.09% (w/v) sodium azide and 2% sucrose.
Concentration:	lot specific
Purification:	Protein A purified
Conjugation:	Unconjugated
Storage:	Store at -20°C as received.
Stability:	Stable for 12 months from date of receipt.
Predicted Protein Size:	376 kDa
Gene Name:	golgin B1
Database Link:	<a href="#">NP_004478</a> <a href="#">Entrez Gene 2804 Human</a> <a href="#">Q14789</a>
Background:	May participate in forming intercisternal cross-bridges of the Golgi complex.
Synonyms:	GCP; GCP372; GOLIM1
Note:	Immunogen Sequence Homology: Dog: 100%; Pig: 100%; Human: 100%; Bovine: 100%; Rabbit: 100%; Horse: 93%; Rat: 92%; Mouse: 85%
Protein Families:	Transcription Factors, Transmembrane

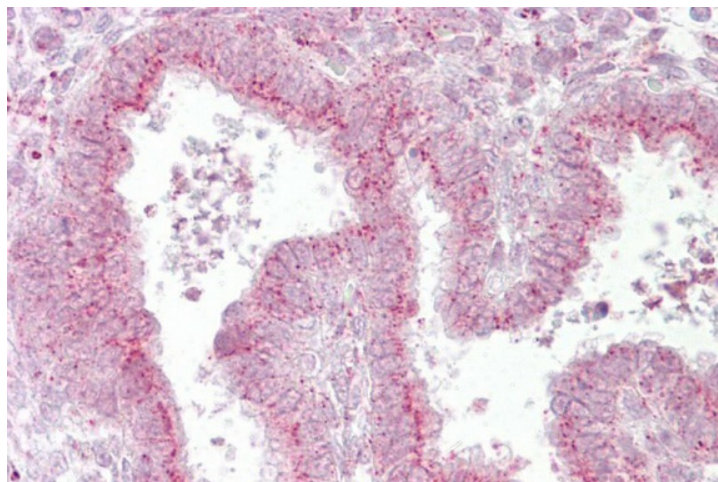


[View online »](#)

## Product images:



WB Suggested Anti-GOLGB1 Antibody Titration:  
0.2-1 ug/ml; ELISA Titer: 1: 12500; Positive  
Control: 721\_B cell lysate. GOLGB1 is supported  
by BioGPS gene expression data to be expressed  
in 721\_B



Uterus