

Product datasheet for **TA339414**

Ephrin B1 (EFNB1) Rabbit Polyclonal Antibody

Product data:

Product Type:	Primary Antibodies
Applications:	WB
Recommended Dilution:	WB
Reactivity:	Mouse, Human
Host:	Rabbit
Isotype:	IgG
Clonality:	Polyclonal
Immunogen:	The immunogen for anti-EFNB1 antibody: synthetic peptide directed towards the middle region of human EFNB1. Synthetic peptide located within the following region: SRPSKEADNTVKMATQAPGSRGSLGDSDGKHETVNQEEKSGPGASGGSSG
Formulation:	Liquid. Purified antibody supplied in 1x PBS buffer with 0.09% (w/v) sodium azide and 2% sucrose. <i>Note that this product is shipped as lyophilized powder to China customers.</i>
Concentration:	lot specific
Purification:	Protein A purified
Conjugation:	Unconjugated
Storage:	Store at -20°C as received.
Stability:	Stable for 12 months from date of receipt.
Predicted Protein Size:	35 kDa
Gene Name:	ephrin B1
Database Link:	NP_004420 Entrez Gene 13641 Mouse Entrez Gene 1947 Human P98172
Background:	The protein encoded by this gene is a type I membrane protein and a ligand of Eph-related receptor tyrosine kinases. It may play a role in cell adhesion and function in the development or maintenance of the nervous system. [provided by RefSeq, Jul 2008]
Synonyms:	CFND; CFNS; EFB1; EFL3; Elk-L; EPLG2; LERK2



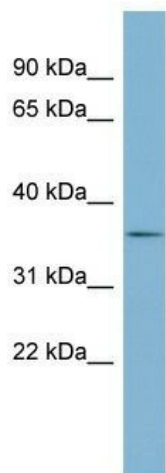
[View online »](#)

Note: Immunogen Sequence Homology: Dog: 100%; Pig: 100%; Rat: 100%; Human: 100%; Mouse: 100%; Rabbit: 100%; Guinea pig: 100%; Bovine: 93%

Protein Families: Druggable Genome, Transmembrane

Protein Pathways: Axon guidance

Product images:



WB Suggested Anti-EFNB1 Antibody Titration: 0.2-1 ug/ml; Positive Control: Human kidney