

Product datasheet for **TA339410**

CPT1B Rabbit Polyclonal Antibody

Product data:

Product Type:	Primary Antibodies
Applications:	IHC, WB
Recommended Dilution:	IHC, WB
Reactivity:	Human, Mouse
Host:	Rabbit
Isotype:	IgG
Clonality:	Polyclonal
Immunogen:	The immunogen for anti-CPT1B antibody: synthetic peptide directed towards the middle region of human CPT1B. Synthetic peptide located within the following region: DLEMQFQRILDDPSPQPGEKLAALTAGGRVEWAQARQAFFSSGKNKAA
Formulation:	Liquid. Purified antibody supplied in 1x PBS buffer with 0.09% (w/v) sodium azide and 2% sucrose. <i>Note that this product is shipped as lyophilized powder to China customers.</i>
Concentration:	lot specific
Purification:	Protein A purified
Conjugation:	Unconjugated
Storage:	Store at -20°C as received.
Stability:	Stable for 12 months from date of receipt.
Predicted Protein Size:	88 kDa
Gene Name:	carnitine palmitoyltransferase 1B
Database Link:	NP_004368 Entrez Gene 12895 Mouse Entrez Gene 1375 Human Q92523



[View online »](#)

Background: The protein encoded by this gene, a member of the carnitine/choline acetyltransferase family, is the rate-controlling enzyme of the long-chain fatty acid beta-oxidation pathway in muscle mitochondria. This enzyme is required for the net transport of long-chain fatty acyl-CoAs from the cytoplasm into the mitochondria. Multiple transcript variants encoding different isoforms have been found for this gene, and read-through transcripts are expressed from the upstream locus that include exons from this gene. [provided by RefSeq, Jun 2009]

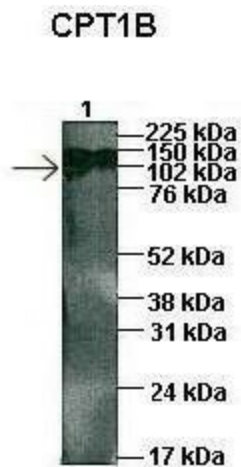
Synonyms: CPT1-M; CPT1M; CPTI; CPTI-M; M-CPT1; MCCPT1; MCPT1

Note: Immunogen Sequence Homology: Dog: 100%; Pig: 100%; Rat: 100%; Human: 100%; Mouse: 100%; Rabbit: 100%; Guinea pig: 100%; Sheep: 93%; Bovine: 93%; Zebrafish: 92%; Horse: 86%

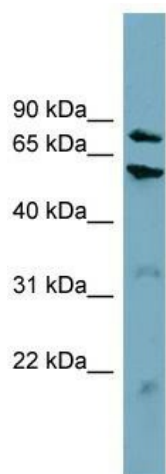
Protein Families: Druggable Genome, Transmembrane

Protein Pathways: Adipocytokine signaling pathway, Fatty acid metabolism, PPAR signaling pathway

Product images:

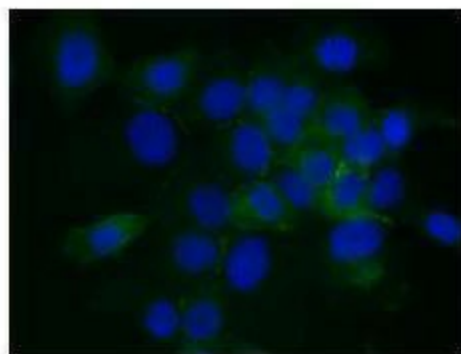


Sample Type: 1: 45ug human capan1 cell lysate
Primary Antibody Dilution: 1: 1000; Secondary Antibody Dilution: 1: 5000; Color/Signal Descriptions: ARP46444-QC16367-WB-image-02; Gene Name: CPT1B; Submitted by: Dr. Panka



WB Suggested Anti-CPT1B Antibody Titration: 0.2-1 ug/ml; ELISA Titer: 1: 62500; Positive Control: HT1080 cell lysate. CPT1B is supported by BioGPS gene expression data to be expressed in HT1080

CPT1B



Green: CPT1B Blue: DAPI

researcher: Dr. Pankaj Kumar Singh, UNMC, Omaha, NE; Application: IHC; Species+tissue/cell type: Species+tissue/cell type: Human Capan1 cells; Primary antibody dilution: 1: 300; Secondary antibody: Anti-rabbit Alexa Fluor 488; Secondary antibody dilution: