

Product datasheet for **TA339407**

Cadherin 7 (CDH7) Rabbit Polyclonal Antibody

Product data:

Product Type:	Primary Antibodies
Applications:	WB
Recommended Dilution:	WB
Reactivity:	Human
Host:	Rabbit
Isotype:	IgG
Clonality:	Polyclonal
Immunogen:	The immunogen for anti-CDH7 antibody: synthetic peptide directed towards the N terminal of human CDH7. Synthetic peptide located within the following region: PKFLDGPYTAGVPEMSPVGTSSVQVTATDADDPTYGNSARVVYSILQGQP
Formulation:	Liquid. Purified antibody supplied in 1x PBS buffer with 0.09% (w/v) sodium azide and 2% sucrose. <i>Note that this product is shipped as lyophilized powder to China customers.</i>
Concentration:	lot specific
Purification:	Protein A purified
Conjugation:	Unconjugated
Storage:	Store at -20°C as received.
Stability:	Stable for 12 months from date of receipt.
Predicted Protein Size:	82 kDa
Gene Name:	cadherin 7
Database Link:	NP_004352 Entrez Gene 1005 Human Q9ULB5



[View online »](#)

Background:

This gene is a type II classical cadherin from the cadherin superfamily. The encoded membrane protein is a calcium dependent cell-cell adhesion glycoprotein comprised of five extracellular cadherin repeats, a transmembrane region and a highly conserved cytoplasmic tail. Type II (atypical) cadherins are defined based on their lack of a HAV cell adhesion recognition sequence specific to type I cadherins. Cadherins mediate cell-cell binding in a homophilic manner, contributing to the sorting of heterogeneous cell types and the maintenance of orderly structures. Alternative splicing in the 5' UTR of this gene yields variant transcripts encoding the same protein. [provided by RefSeq, Jul 2008]

Synonyms:

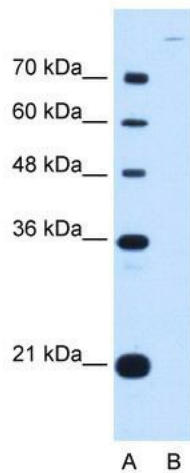
CDH7L1

Note:

Immunogen Sequence Homology: Dog: 100%; Pig: 100%; Rat: 100%; Horse: 100%; Human: 100%; Mouse: 100%; Bovine: 100%; Rabbit: 100%; Zebrafish: 100%; Guinea pig: 100%

Protein Families:

Transmembrane

Product images:

WB Suggested Anti-CDH7 Antibody Titration: 0.2-1 ug/ml; Positive Control: HepG2 cell lysate