

Product datasheet for TA339406

Cdh7 Rabbit Polyclonal Antibody

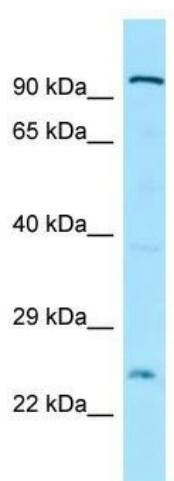
Product data:

Product Type:	Primary Antibodies
Applications:	WB
Recommended Dilution:	WB
Reactivity:	Rat
Host:	Rabbit
Isotype:	IgG
Clonality:	Polyclonal
Immunogen:	The immunogen for Anti-Cdh7 antibody is: synthetic peptide directed towards the N-terminal region of Rat Cdh7. Synthetic peptide located within the following region: WNQFFVLEEYMGSDPLYVGKLHSDVDKGDGFIKYILSGEGASSIFIIDEN
Formulation:	Liquid. Purified antibody supplied in 1x PBS buffer with 0.09% (w/v) sodium azide and 2% sucrose.
Concentration:	lot specific
Purification:	Protein A purified
Conjugation:	Unconjugated
Storage:	Store at -20°C as received.
Stability:	Stable for 12 months from date of receipt.
Predicted Protein Size:	86 kDa
Gene Name:	cadherin 7
Database Link:	NP_001012755 Entrez Gene 29162 Rat Q5DWV2
Background:	Cadherins are calcium-dependent cell adhesion proteins. They preferentially interact with themselves in a homophilic manner in connecting cells; cadherins may thus contribute to the sorting of heterogeneous cell types.
Synonyms:	cadherin-7; CDH7L1; OTTHUMP00000163685


[View online »](#)

Note: Immunogen Sequence Homology: Dog: 100%; Rat: 100%; Horse: 100%; Human: 100%; Mouse: 100%; Bovine: 100%; Rabbit: 100%; Pig: 86%; Guinea pig: 86%; Zebrafish: 85%

Product images:



WB Suggested Anti-Cdh7 Antibody; Titration: 1.0 ug/ml; Positive Control: Rat Heart