

Product datasheet for **TA339405**

PIGL Rabbit Polyclonal Antibody

Product data:

Product Type:	Primary Antibodies
Applications:	WB
Recommended Dilution:	WB
Reactivity:	Human
Host:	Rabbit
Isotype:	IgG
Clonality:	Polyclonal
Immunogen:	The immunogen for anti-PIGL antibody: synthetic peptide directed towards the N terminal of human PIGL. Synthetic peptide located within the following region: MEAMWLLCVLAVLAWGFLWVWDSSERMKSREQGRLGAESRTLLVIAHP
Formulation:	Liquid. Purified antibody supplied in 1x PBS buffer with 0.09% (w/v) sodium azide and 2% sucrose. <i>Note that this product is shipped as lyophilized powder to China customers.</i>
Concentration:	lot specific
Purification:	Protein A purified
Conjugation:	Unconjugated
Storage:	Store at -20°C as received.
Stability:	Stable for 12 months from date of receipt.
Predicted Protein Size:	28 kDa
Gene Name:	phosphatidylinositol glycan anchor biosynthesis class L
Database Link:	NP_004269 Entrez Gene 9487 Human Q9Y2B2
Background:	This gene encodes an enzyme that catalyzes the second step of glycosylphosphatidylinositol (GPI) biosynthesis, which is the de-N-acetylation of N-acetylglucosaminylphosphatidylinositol (GlcNAc-PI). Study of a similar rat enzyme suggests that this protein localizes to the endoplasmic reticulum. [provided by RefSeq, Jul 2008]
Synonyms:	CHIME



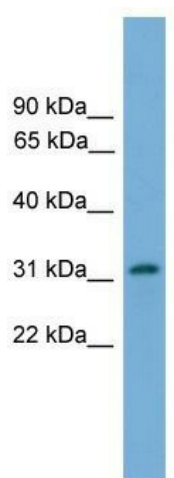
[View online »](#)

Note: Immunogen Sequence Homology: Human: 100%

Protein Families: Transmembrane

Protein Pathways: Glycosylphosphatidylinositol(GPI)-anchor biosynthesis, Metabolic pathways

Product images:



WB Suggested Anti-PIGL Antibody Titration: 0.2-1 ug/ml; Positive Control: 721_B cell lysate. PIGL is supported by BioGPS gene expression data to be expressed in 721_B