

Product datasheet for **TA339404**

CHST2 Rabbit Polyclonal Antibody

Product data:

Product Type:	Primary Antibodies
Applications:	WB
Recommended Dilution:	WB
Reactivity:	Human
Host:	Rabbit
Isotype:	IgG
Clonality:	Polyclonal
Immunogen:	The immunogen for anti-CHST2 antibody: synthetic peptide directed towards the middle region of human CHST2. Synthetic peptide located within the following region: NAWRTALTFQQIKQVEEFCYQPMAVLGYERVNSPEEVKDLSTLLRKPRL
Formulation:	Liquid. Purified antibody supplied in 1x PBS buffer with 0.09% (w/v) sodium azide and 2% sucrose. <i>Note that this product is shipped as lyophilized powder to China customers.</i>
Concentration:	lot specific
Purification:	Protein A purified
Conjugation:	Unconjugated
Storage:	Store at -20°C as received.
Stability:	Stable for 12 months from date of receipt.
Predicted Protein Size:	58 kDa
Gene Name:	carbohydrate sulfotransferase 2
Database Link:	NP_004258 Entrez Gene 9435 Human Q9Y4C5
Background:	This locus encodes a sulfotransferase protein. The encoded enzyme catalyzes the sulfation of a nonreducing N-acetylglucosamine residue, and may play a role in biosynthesis of 6-sulfosialyl Lewis X antigen. [provided by RefSeq, Aug 2011]
Synonyms:	C6ST; gIcNAc6ST-1; Gn6ST-1; GST-2; GST2; HEL-S-75



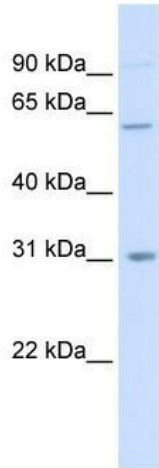
[View online »](#)

Note: Immunogen Sequence Homology: Dog: 100%; Pig: 100%; Rat: 100%; Horse: 100%; Human: 100%; Mouse: 100%; Bovine: 100%; Rabbit: 100%; Guinea pig: 100%

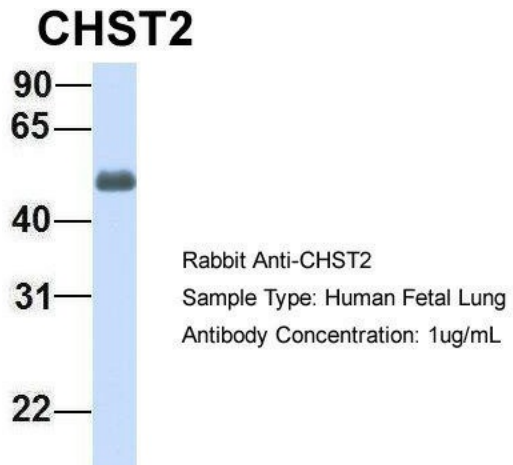
Protein Families: Transmembrane

Protein Pathways: Keratan sulfate biosynthesis, Metabolic pathways

Product images:

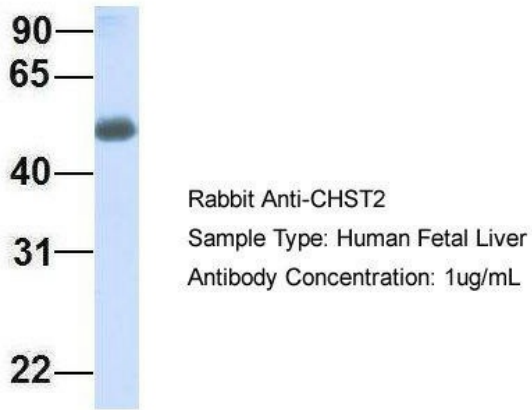


WB Suggested Anti-CHST2 Antibody Titration: 0.2-1 ug/ml; ELISA Titer: 1: 62500; Positive Control: 293T cell lysate



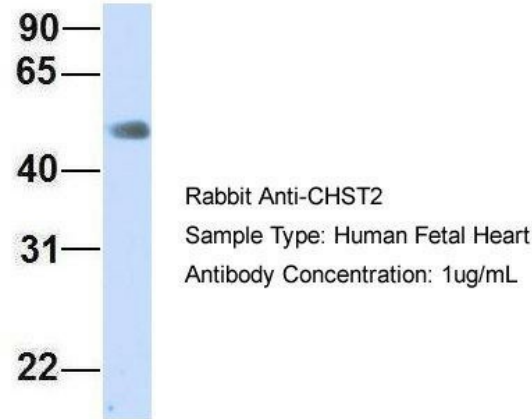
Host: Rabbit; Target Name: CHST2; Sample Tissue: Human Fetal Lung; Antibody Dilution: 1.0 ug/ml

CHST2



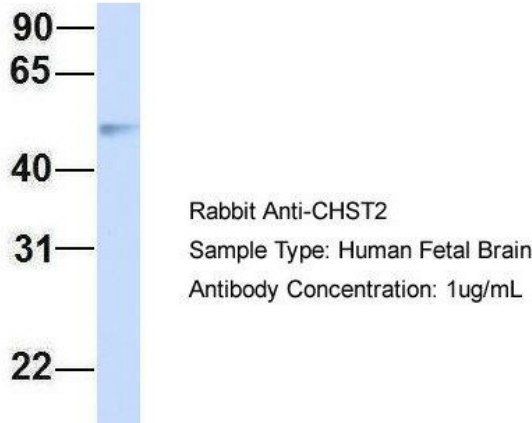
Host: Rabbit; Target Name: CHST2; Sample Tissue: Human Fetal Liver; Antibody Dilution: 1.0 ug/ml

CHST2



Host: Rabbit; Target Name: CHST2; Sample Tissue: Human Fetal Heart; Antibody Dilution: 1.0 ug/ml

CHST2



Host: Rabbit; Target Name: CHST2; Sample Tissue: Human Fetal Brain; Antibody Dilution: 1.0 ug/ml

