

Product datasheet for **TA339403**

SEMA4F Rabbit Polyclonal Antibody

Product data:

Product Type:	Primary Antibodies
Applications:	WB
Recommended Dilution:	WB
Reactivity:	Human
Host:	Rabbit
Isotype:	IgG
Clonality:	Polyclonal
Immunogen:	The immunogen for anti-SEMA4F antibody: synthetic peptide directed towards the n terminal of human SEMA4F. Synthetic peptide located within the following region: PFSGERPRRIDWMVPEAHRQNCRKKGKKEGDLGGRKTLQQRWTTFLKADL
Formulation:	Liquid. Purified antibody supplied in 1x PBS buffer with 0.09% (w/v) sodium azide and 2% sucrose. <i>Note that this product is shipped as lyophilized powder to China customers.</i>
Concentration:	lot specific
Purification:	Protein A purified
Conjugation:	Unconjugated
Storage:	Store at -20°C as received.
Stability:	Stable for 12 months from date of receipt.
Predicted Protein Size:	67 kDa
Gene Name:	ssemaphorin 4F
Database Link:	NP_004254 Entrez Gene 10505 Human O95754
Background:	This gene encodes a transmembrane class IV semaphorin family protein, which plays a role in neural development. This gene may be involved in neurogenesis in prostate cancer, the development of neurofibromas, and breast cancer tumorigenesis. Alternative splicing results in multiple transcript variants. [provided by RefSeq, Nov 2012]
Synonyms:	M-SEMA; m-Sema-M; PRO2353; S4F; SEMAM; SEMAW



[View online »](#)

Note: Immunogen Sequence Homology: Pig: 100%; Rat: 100%; Horse: 100%; Human: 100%; Mouse: 100%; Bovine: 100%; Rabbit: 100%; Guinea pig: 100%; Dog: 93%

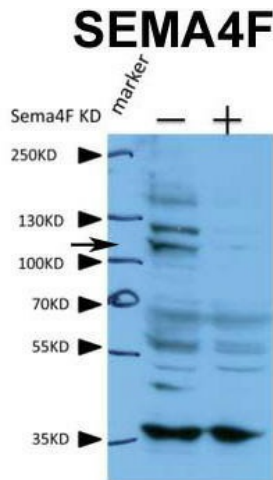
Protein Families: Transmembrane

Protein Pathways: Axon guidance

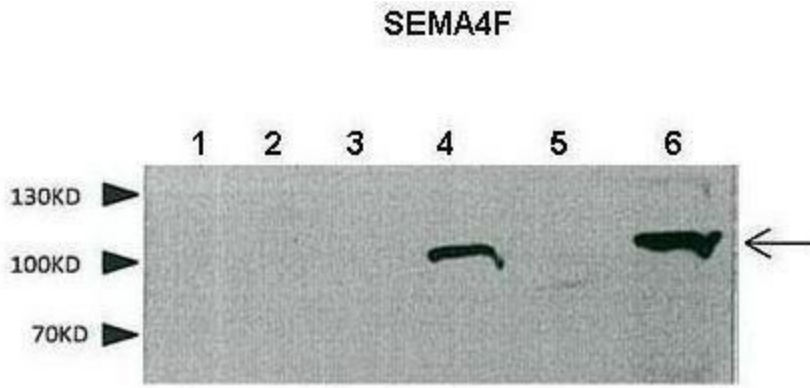
Product images:



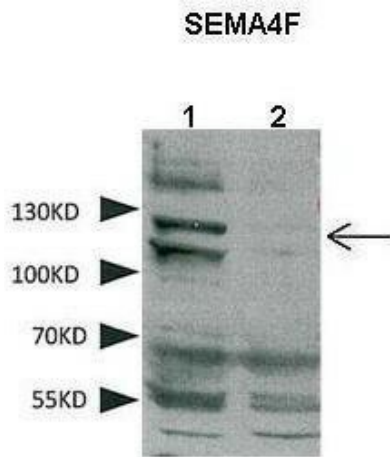
WB Suggested Anti-SEMA4F Antibody Titration: 0.2-1 ug/ml; ELISA Titer: 1: 312500; Positive Control: Transfected 293T



human cell line A431; Primary antibody dilution and incubation time: 1: 600, 4 degree overnight. Secondary antibody used and dilution and incubation time: 1: 3000, RT 2 hours



Lanes: 1. Untransfected MIA-PACA2 cell lysate; 2. Untransfected MIA-PACA2 cell lysate; 3. Untransfected MIA-PACA2 cell lysate; 4. hSEMA4F transfected MIA-PACA2 cell lysate; 5. Untransfected MIA-PACA2 cell lysate; 6. hSEMA4F transfected MIA-PACA2 cell lysate



Lanes: 1. A431 cell lysate + control siRNA 2. A431 cell lysate + SEMA4F siRNA; Primary Antibody Dilution: 1: 600; Secondary Antibody: Donkey Anti-rabbit HRP; Secondary Antibody Dilution: 1: 3000; Gene Name: SEMA4F; Submitted by: Dr. Tianliang Sun, Max Pla