

Product datasheet for **TA339400**

TMPRSS11D Rabbit Polyclonal Antibody

Product data:

Product Type:	Primary Antibodies
Applications:	IHC, WB
Recommended Dilution:	WB, IHC
Reactivity:	Human
Host:	Rabbit
Isotype:	IgG
Clonality:	Polyclonal
Immunogen:	The immunogen for anti-TMPRSS11D antibody: synthetic peptide directed towards the N terminal of human TMPRSS11D. Synthetic peptide located within the following region: RSSFQLLNVEYNSQLNSPATQEYRTLSGRIESLITKTFKESNLRNQFIRA
Formulation:	Liquid. Purified antibody supplied in 1x PBS buffer with 0.09% (w/v) sodium azide and 2% sucrose. <i>Note that this product is shipped as lyophilized powder to China customers.</i>
Concentration:	lot specific
Purification:	Protein A purified
Conjugation:	Unconjugated
Storage:	Store at -20°C as received.
Stability:	Stable for 12 months from date of receipt.
Predicted Protein Size:	46 kDa
Gene Name:	transmembrane protease, serine 11D
Database Link:	NP_004253 Entrez Gene 9407 Human O60235



[View online »](#)

Background:

This gene encodes a trypsin-like serine protease released from the submucosal serous glands onto mucous membrane. It is a type II integral membrane protein and has 29-38% identity in the sequence of the catalytic region with human hepsin, enteropeptidase, acrosin, and mast cell tryptase. The noncatalytic region has little similarity to other known proteins. This protein may play some biological role in the host defense system on the mucous membrane independently of or in cooperation with other substances in airway mucous or bronchial secretions. [provided by RefSeq, Jul 2008]

Synonyms:

HAT

Note:

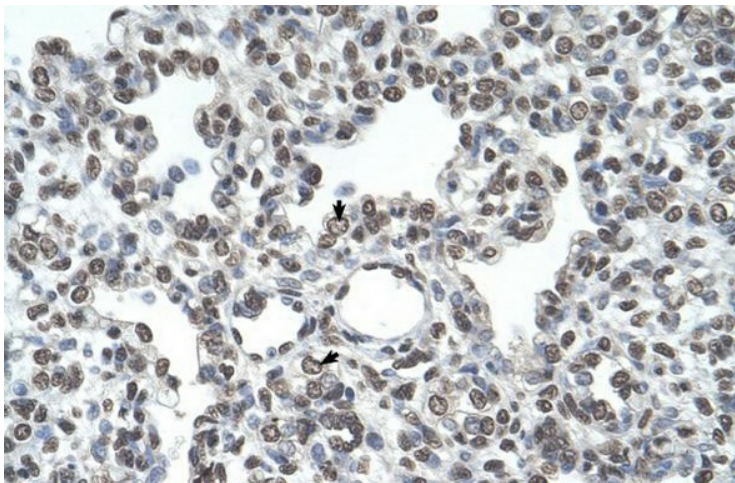
Immunogen Sequence Homology: Human: 100%; Pig: 79%; Horse: 79%; Rabbit: 79%; Guinea pig: 79%

Protein Families:

Druggable Genome, Protease, Secreted Protein, Transmembrane

Product images:

WB Suggested Antibody Titration: 2.5 ug/ml;
Positive Control: HepG2



Human Lung