

## Product datasheet for **TA339399**

### PIGQ Rabbit Polyclonal Antibody

#### Product data:

Product Type:	Primary Antibodies
Applications:	WB
Recommended Dilution:	WB
Reactivity:	Human
Host:	Rabbit
Isotype:	IgG
Clonality:	Polyclonal
Immunogen:	The immunogen for anti-PIGQ antibody: synthetic peptide directed towards the N terminal of human PIGQ. Synthetic peptide located within the following region: PTVLPDRQAGATTASTGGLAAVFDTVARSEVLFRRSDRFDEGPVRLSHWQS
Formulation:	Liquid. Purified antibody supplied in 1x PBS buffer with 0.09% (w/v) sodium azide and 2% sucrose. <i>Note that this product is shipped as lyophilized powder to China customers.</i>
Concentration:	lot specific
Purification:	Protein A purified
Conjugation:	Unconjugated
Storage:	Store at -20°C as received.
Stability:	Stable for 12 months from date of receipt.
Predicted Protein Size:	65 kDa
Gene Name:	phosphatidylinositol glycan anchor biosynthesis class Q
Database Link:	<a href="#">NP_004195</a> <a href="#">Entrez Gene 9091 Human</a> <a href="#">Q9BRB3</a>



[View online »](#)

**Background:** This gene is involved in the first step in glycosylphosphatidylinositol (GPI)-anchor biosynthesis. The GPI-anchor is a glycolipid found on many blood cells and serves to anchor proteins to the cell surface. This gene encodes a N-acetylglucosaminyl transferase component that is part of the complex that catalyzes transfer of N-acetylglucosamine (GlcNAc) from UDP-GlcNAc to phosphatidylinositol (PI). Alternatively spliced transcript variants encoding different isoforms have been found for this gene. [provided by RefSeq, Jun 2012]

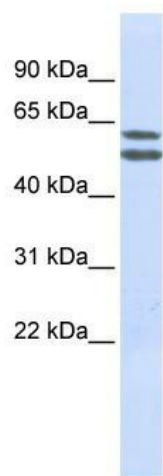
**Synonyms:** c407A10.1; GPI1

**Note:** Immunogen Sequence Homology: Human: 100%; Horse: 93%; Bovine: 93%; Rabbit: 93%; Dog: 86%; Rat: 86%; Pig: 79%; Mouse: 79%; Guinea pig: 79%

**Protein Families:** Transmembrane

**Protein Pathways:** Glycosylphosphatidylinositol(GPI)-anchor biosynthesis, Metabolic pathways

### Product images:



WB Suggested Anti-PIGQ Antibody Titration: 0.2-1 ug/ml; ELISA Titer: 1: 312500; Positive Control: Jurkat cell lysate