

## Product datasheet for **TA339393**

### FCER1G Rabbit Polyclonal Antibody

#### Product data:

Product Type:	Primary Antibodies
Applications:	WB
Recommended Dilution:	WB
Reactivity:	Human
Host:	Rabbit
Isotype:	IgG
Clonality:	Polyclonal
Immunogen:	The immunogen for anti-FCER1G antibody: synthetic peptide directed towards the N terminal of human FCER1G. Synthetic peptide located within the following region: MIPAVLLLLLLLVEQAAALGEPQLCYILDAILFLYGIVLTLTYCRLKIQV
Formulation:	Liquid. Purified antibody supplied in 1x PBS buffer with 0.09% (w/v) sodium azide and 2% sucrose. <i>Note that this product is shipped as lyophilized powder to China customers.</i>
Concentration:	lot specific
Purification:	Protein A purified
Conjugation:	Unconjugated
Storage:	Store at -20°C as received.
Stability:	Stable for 12 months from date of receipt.
Predicted Protein Size:	8 kDa
Gene Name:	Fc fragment of IgE receptor Ig
Database Link:	<a href="#">NP_004097</a> <a href="#">Entrez Gene 2207 Human P30273</a>
Background:	The high affinity IgE receptor is a key molecule involved in allergic reactions. It is a tetramer composed of 1 alpha, 1 beta, and 2 gamma chains. The gamma chains are also subunits of other Fc receptors. [provided by RefSeq, Jul 2008]
Synonyms:	FCRG



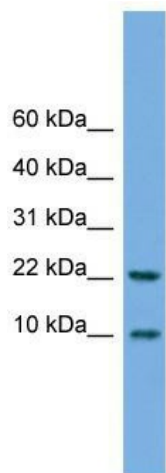
[View online »](#)

**Note:** Immunogen Sequence Homology: Dog: 100%; Pig: 100%; Human: 100%; Mouse: 100%; Bovine: 100%; Guinea pig: 100%; Rat: 93%

**Protein Families:** Transmembrane

**Protein Pathways:** Asthma, Fc epsilon RI signaling pathway, Natural killer cell mediated cytotoxicity

### Product images:



WB Suggested Anti-FCER1G Antibody Titration:  
0.2-1 ug/ml; ELISA Titer: 1: 62500; Positive  
Control: Hela cell lysate