

Product datasheet for **TA339390**

OSMR Rabbit Polyclonal Antibody

Product data:

Product Type:	Primary Antibodies
Applications:	WB
Recommended Dilution:	WB
Reactivity:	Human
Host:	Rabbit
Isotype:	IgG
Clonality:	Polyclonal
Immunogen:	The immunogen for anti-OSMR antibody: synthetic peptide directed towards the N terminal of human OSMR. Synthetic peptide located within the following region: YQSEVLAERLPLTPVSLKVSTNSTRQSLHLQWTVHNLPHYQELKMFQIQ
Formulation:	Liquid. Purified antibody supplied in 1x PBS buffer with 0.09% (w/v) sodium azide and 2% sucrose. <i>Note that this product is shipped as lyophilized powder to China customers.</i>
Concentration:	lot specific
Purification:	Protein A purified
Conjugation:	Unconjugated
Storage:	Store at -20°C as received.
Stability:	Stable for 12 months from date of receipt.
Predicted Protein Size:	110 kDa
Gene Name:	oncostatin M receptor
Database Link:	NP_003990 Entrez Gene 9180 Human Q99650



[View online »](#)

Background: This gene encodes a member of the type I cytokine receptor family. The encoded protein heterodimerizes with interleukin 6 signal transducer to form the type II oncostatin M receptor and with interleukin 31 receptor A to form the interleukin 31 receptor, and thus transduces oncostatin M and interleukin 31 induced signaling events. Mutations in this gene have been associated with familial primary localized cutaneous amyloidosis. Alternatively spliced transcript variants encoding different isoforms have been found for this gene. [provided by RefSeq, Dec 2009]

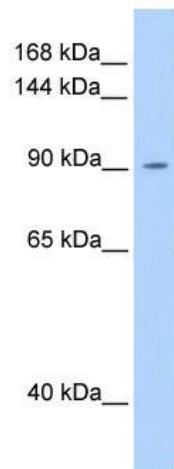
Synonyms: IL-31R-beta; IL-31RB; OSMRB; PLCA1

Note: Immunogen Sequence Homology: Human: 100%; Dog: 79%; Bovine: 77%

Protein Families: Druggable Genome, Transmembrane

Protein Pathways: Cytokine-cytokine receptor interaction, Jak-STAT signaling pathway

Product images:



WB Suggested Anti-OSMR Antibody Titration: 0.2-1 ug/ml; Positive Control: HT1080 cell lysate. OSMR is supported by BioGPS gene expression data to be expressed in HT1080