

Product datasheet for **TA339389**

MPZL (MPZL1) Rabbit Polyclonal Antibody

Product data:

Product Type:	Primary Antibodies
Applications:	WB
Recommended Dilution:	WB
Reactivity:	Human
Host:	Rabbit
Isotype:	IgG
Clonality:	Polyclonal
Immunogen:	The immunogen for anti-MPZL1 antibody: synthetic peptide directed towards the middle region of human MPZL1. Synthetic peptide located within the following region: ISWAGDLDKKASINIENMQFIHNGTYICDVKNPPDIVVQPGHIRLYVVE
Formulation:	Liquid. Purified antibody supplied in 1x PBS buffer with 0.09% (w/v) sodium azide and 2% sucrose. <i>Note that this product is shipped as lyophilized powder to China customers.</i>
Concentration:	lot specific
Purification:	Protein A purified
Conjugation:	Unconjugated
Storage:	Store at -20°C as received.
Stability:	Stable for 12 months from date of receipt.
Predicted Protein Size:	23 kDa
Gene Name:	myelin protein zero like 1
Database Link:	NP_078845 Entrez Gene 9019 Human O95297
Background:	MPZL1 is a cell surface receptor, which is involved in signal transduction processes. MPZL1 recruits PTPN11/SHP-2 to the cell membrane and is a putative substrate of PTPN11/SHP-2. MPZL1 is a major receptor for concanavalin A (ConA) and is involved in cell
Synonyms:	MPZL1b; PZR; PZR1b; PZRa; PZRb



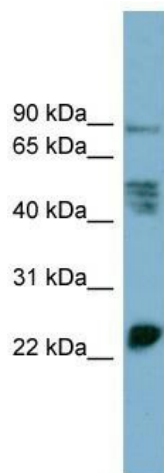
[View online »](#)

Note: Immunogen Sequence Homology: Dog: 100%; Rat: 100%; Horse: 100%; Human: 100%; Mouse: 100%; Bovine: 100%; Rabbit: 100%; Pig: 93%; Guinea pig: 93%

Protein Families: Druggable Genome, Transmembrane

Protein Pathways: Cell adhesion molecules (CAMs)

Product images:



WB Suggested Anti-MPZL1 Antibody Titration:
0.2-1 ug/ml; ELISA Titer: 1: 62500; Positive
Control: PANC1 cell lysate
There is BioGPS gene
expression data showing that MPZL1 is
expressed in PANC1