

Product datasheet for **TA339388**

SGCE Rabbit Polyclonal Antibody

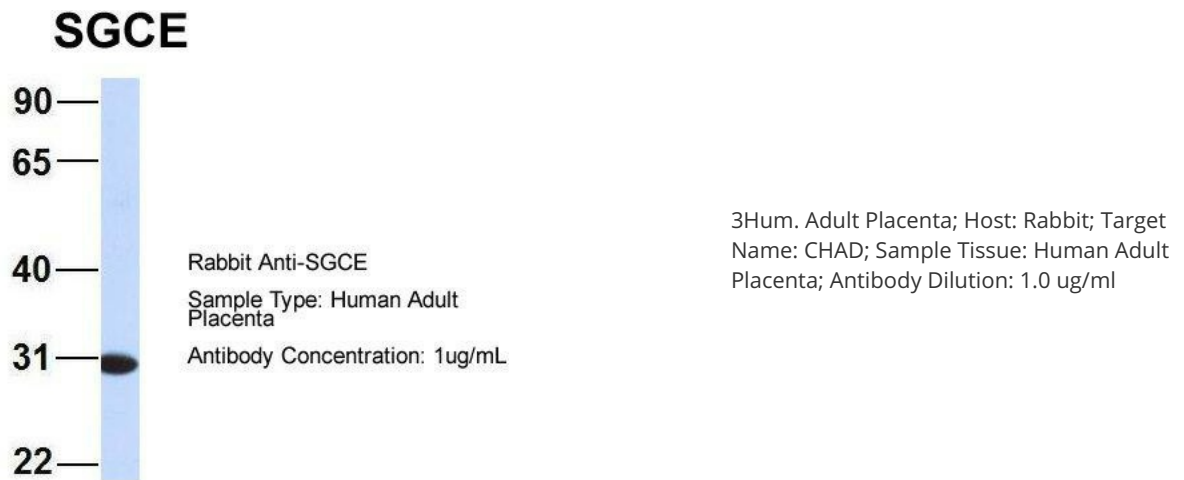
Product data:

Product Type:	Primary Antibodies
Applications:	IHC, WB
Recommended Dilution:	WB, IHC
Reactivity:	Human, Mouse
Host:	Rabbit
Isotype:	IgG
Clonality:	Polyclonal
Immunogen:	The immunogen for anti-SGCE antibody: synthetic peptide directed towards the N terminal of human SGCE. Synthetic peptide located within the following region: TVYSIFSKVHSDRNVYPSAGVLFVHVLEREYFKGEFPPYKPKGEISNDPI
Formulation:	Liquid. Purified antibody supplied in 1x PBS buffer with 0.09% (w/v) sodium azide and 2% sucrose. <i>Note that this product is shipped as lyophilized powder to China customers.</i>
Concentration:	lot specific
Purification:	Protein A purified
Conjugation:	Unconjugated
Storage:	Store at -20°C as received.
Stability:	Stable for 12 months from date of receipt.
Predicted Protein Size:	52 kDa
Gene Name:	sarcoglycan epsilon
Database Link:	NP_001092871 Entrez Gene 20392 Mouse Entrez Gene 8910 Human O43556

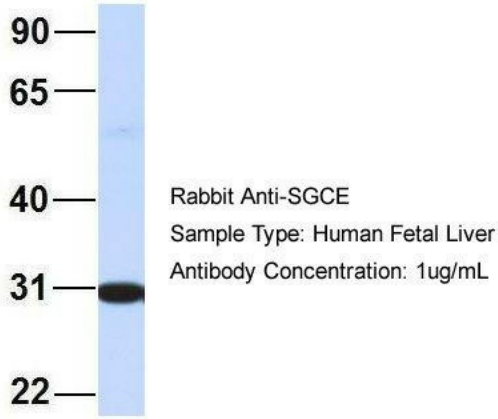


[View online »](#)

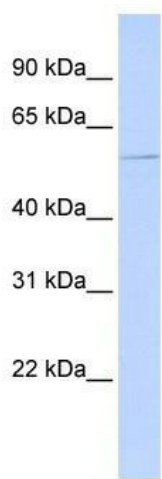
Background:	This gene encodes the epsilon member of the sarcoglycan family. Sarcoglycans are transmembrane proteins that are components of the dystrophin-glycoprotein complex, which link the actin cytoskeleton to the extracellular matrix. Unlike other family members which are predominantly expressed in striated muscle, the epsilon sarcoglycan is more broadly expressed. Mutations in this gene are associated with myoclonus-dystonia syndrome. This gene is imprinted, with preferential expression from the paternal allele. Alternatively spliced transcript variants encoding different isoforms have been found for this gene. [provided by RefSeq, Oct 2010]
Synonyms:	DYT11; ESG
Note:	Immunogen Sequence Homology: Dog: 100%; Pig: 100%; Rat: 100%; Horse: 100%; Human: 100%; Mouse: 100%; Bovine: 100%; Rabbit: 100%; Zebrafish: 100%; Guinea pig: 100%
Protein Families:	Transmembrane

Product images:

SGCE

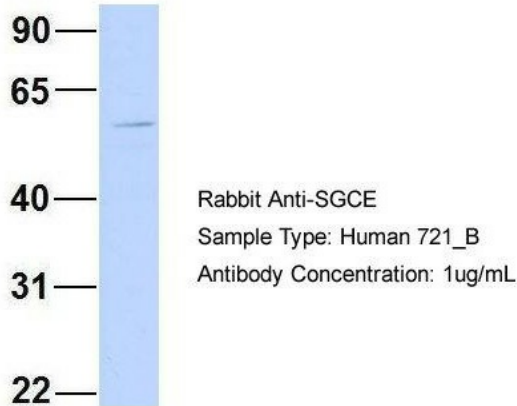


4Hum. Fetal Liver; Host: Rabbit; Target Name: FAM46C; Sample Tissue: Human Fetal Liver; Antibody Dilution: 1.0 ug/ml

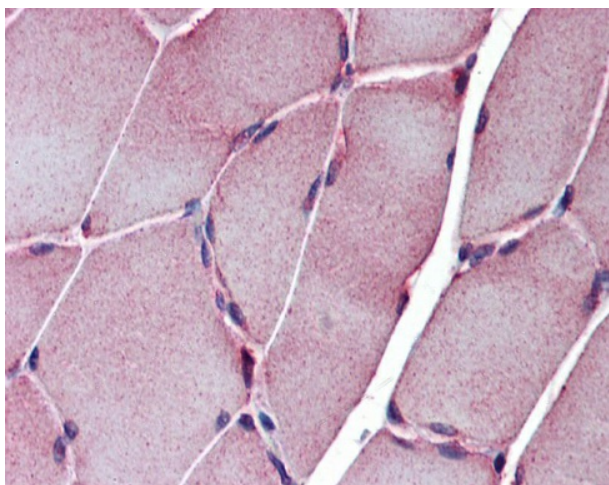


WB Suggested Anti-SGCE Antibody Titration: 0.2-1 ug/ml; ELISA Titer: 1: 312500; Positive Control: 721_B cell lysate.SGCE is supported by BioGPS gene expression data to be expressed in 721_B

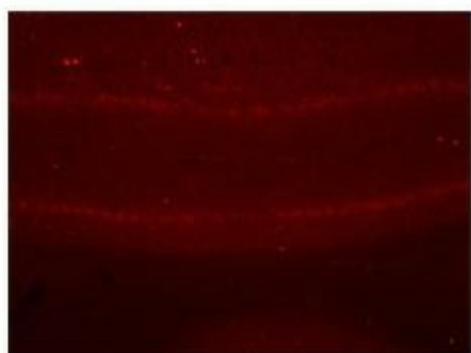
SGCE



6Human 721_B; Host: Rabbit; Target Name: WT1; Sample Tissue: 721_B; Antibody Dilution: 1.0 ug/ml.SGCE is supported by BioGPS gene expression data to be expressed in 721_B



Immunohistochemistry with pFA fixed human skeletal muscle tissue at an antibody concentration of 5.0 ug/ml using anti-SGCE antibody



Immunohistochemistry with cerebellum tissue