

## Product datasheet for **TA339386**

### IL18R1 Rabbit Polyclonal Antibody

#### Product data:

Product Type:	Primary Antibodies
Applications:	WB
Recommended Dilution:	WB
Reactivity:	Human
Host:	Rabbit
Isotype:	IgG
Clonality:	Polyclonal
Immunogen:	The immunogen for anti-IL18R1 antibody: synthetic peptide directed towards the N terminal of human IL18R1. Synthetic peptide located within the following region: PFYLKHCSCSLAHEIETTTKSWYKSSGSQEHVELNPRSSSRIALHDCVLE
Formulation:	Liquid. Purified antibody supplied in 1x PBS buffer with 0.09% (w/v) sodium azide and 2% sucrose. <i>Note that this product is shipped as lyophilized powder to China customers.</i>
Concentration:	lot specific
Purification:	Protein A purified
Conjugation:	Unconjugated
Storage:	Store at -20°C as received.
Stability:	Stable for 12 months from date of receipt.
Predicted Protein Size:	60 kDa
Gene Name:	interleukin 18 receptor 1
Database Link:	<a href="#">NP_003846</a> <a href="#">Entrez Gene 8809 Human Q13478</a>



[View online »](#)

**Background:** The protein encoded by this gene is a cytokine receptor that belongs to the interleukin 1 receptor family. This receptor specifically binds interleukin 18 (IL18), and is essential for IL18 mediated signal transduction. IFN-alpha and IL12 are reported to induce the expression of this receptor in NK and T cells. This gene along with four other members of the interleukin 1 receptor family, including IL1R2, IL1R1, ILRL2 (IL-1Rrp2), and IL1RL1 (T1/ST2), form a gene cluster on chromosome 2q. Alternatively spliced transcript variants encoding different isoforms have been found for this gene. [provided by RefSeq, Sep 2013]

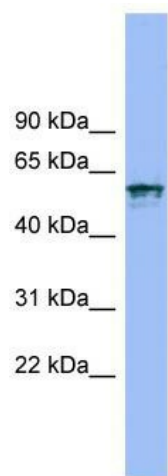
**Synonyms:** CD218a; CDw218a; IL-1Rrp; IL1RRP; IL18RA

**Note:** Immunogen Sequence Homology: Human: 100%

**Protein Families:** Druggable Genome, Transmembrane

**Protein Pathways:** Cytokine-cytokine receptor interaction

### Product images:



WB Suggested Anti-IL18R1 Antibody Titration: 0.2-1 ug/ml; Positive Control: PANC1 cell lysate