

## Product datasheet for **TA339381**

### DLK (DLK1) Rabbit Polyclonal Antibody

#### Product data:

Product Type:	Primary Antibodies
Applications:	WB
Recommended Dilution:	WB
Reactivity:	Human
Host:	Rabbit
Isotype:	IgG
Clonality:	Polyclonal
Immunogen:	The immunogen for anti-DLK1 antibody: synthetic peptide directed towards the middle region of human DLK1. Synthetic peptide located within the following region: SPQQVTRLPSGYGLAYRLTPGVHELPVQQPEHRILK/SMKELNKKTPLLT
Formulation:	Liquid. Purified antibody supplied in 1x PBS buffer with 0.09% (w/v) sodium azide and 2% sucrose. <i>Note that this product is shipped as lyophilized powder to China customers.</i>
Concentration:	lot specific
Purification:	Protein A purified
Conjugation:	Unconjugated
Storage:	Store at -20°C as received.
Stability:	Stable for 12 months from date of receipt.
Predicted Protein Size:	41 kDa
Gene Name:	delta like non-canonical Notch ligand 1
Database Link:	<a href="#">NP_003827</a> <a href="#">Entrez Gene 8788 Human</a> <a href="#">P80370</a>



[View online »](#)

**Background:**

This gene encodes a transmembrane protein containing six epidermal growth factor repeats. The protein is involved in the differentiation of several cell types, including adipocytes; it is also thought to be a tumor suppressor. It is one of several imprinted genes located in a region of on chr 14q32. Certain mutations in this imprinted region can cause phenotypes similar to maternal and paternal uniparental disomy of chromosome 14 (UPD14). This gene is expressed from the paternal allele. A polymorphism within this gene has been associated with child and adolescent obesity. The mode of inheritance for this polymorphism is polar overdominance; this non-Mendelian inheritance pattern was first described in sheep with the callipyge phenotype, which is characterized by muscle hypertrophy and decreased fat mass. [provided by RefSeq, Mar 2010]

**Synonyms:**

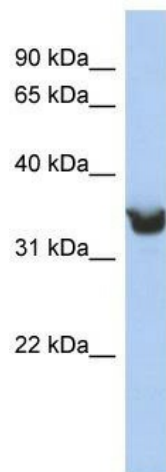
Delta1; DLK; DLK-1; FA1; pG2; Pref-1; PREF1; ZOG

**Note:**

Immunogen Sequence Homology: Rat: 100%; Human: 100%; Dog: 93%; Pig: 93%; Horse: 93%; Mouse: 93%; Sheep: 93%; Guinea pig: 79%

**Protein Families:**

Druggable Genome, ES Cell Differentiation/IPS, Transmembrane

**Product images:**

WB Suggested Anti-DLK1 Antibody Titration: 0.2-1 ug/ml; ELISA Titer: 1: 62500; Positive Control: Human Stomach