

Product datasheet for **TA339377**

Adam23 Rabbit Polyclonal Antibody

Product data:

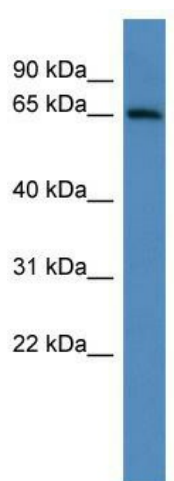
Product Type:	Primary Antibodies
Applications:	WB
Recommended Dilution:	WB
Reactivity:	Mouse
Host:	Rabbit
Isotype:	IgG
Clonality:	Polyclonal
Immunogen:	The immunogen for anti-Adam23 antibody: synthetic peptide corresponding to a region of Mouse. Synthetic peptide located within the following region: NPNPPKDEGPKGPSATNLIIGSIAGAILVAAIVLGGTGWGFKNVKKRRFD
Formulation:	Liquid. Purified antibody supplied in 1x PBS buffer with 0.09% (w/v) sodium azide and 2% sucrose. <i>Note that this product is shipped as lyophilized powder to China customers.</i>
Concentration:	lot specific
Purification:	Protein A purified
Conjugation:	Unconjugated
Storage:	Store at -20°C as received.
Stability:	Stable for 12 months from date of receipt.
Predicted Protein Size:	60 kDa
Gene Name:	a disintegrin and metallopeptidase domain 23
Database Link:	NP_035910 Entrez Gene 23792 Mouse Q9R1V7
Background:	May play a role in cell-cell and cell-matrix interactions. This is a non-catalytic metalloprotease-like protein.
Synonyms:	MDC-3; MDC3



[View online »](#)

Note: Immunogen Sequence Homology: Dog: 100%; Horse: 100%; Human: 100%; Mouse: 100%; Bovine: 100%; Rabbit: 100%

Product images:



WB Suggested Anti-Adam23 Antibody Titration:
0.2-1 ug/ml; ELISA Titer: 1: 62500; Positive
Control: Mouse Heart