

Product datasheet for **TA339375**

HRK Rabbit Polyclonal Antibody

Product data:

Product Type:	Primary Antibodies
Applications:	WB
Recommended Dilution:	WB
Reactivity:	Human
Host:	Rabbit
Isotype:	IgG
Clonality:	Polyclonal
Immunogen:	The immunogen for anti-HRK antibody: synthetic peptide directed towards the N terminal of human HRK. Synthetic peptide located within the following region: MCPCPLHRGRGPPAVCACCSAGRLGLRSSAAQLTAARLKALGDELHQRTMW
Formulation:	Liquid. Purified antibody supplied in 1x PBS buffer with 0.09% (w/v) sodium azide and 2% sucrose. <i>Note that this product is shipped as lyophilized powder to China customers.</i>
Concentration:	lot specific
Purification:	Protein A purified
Conjugation:	Unconjugated
Storage:	Store at -20°C as received.
Stability:	Stable for 12 months from date of receipt.
Predicted Protein Size:	10 kDa
Gene Name:	harakiri, BCL2 interacting protein
Database Link:	NP_003797 Entrez Gene 8739 Human O00198
Background:	This gene encodes a member of the BCL-2 protein family. Members of this family are involved in activating or inhibiting apoptosis. The encoded protein localizes to intracellular membranes. This protein promotes apoptosis by interacting with the apoptotic inhibitors BCL-2 and BCL-X(L) via its BH3 domain. Alternate splicing results in multiple transcript variants. [provided by RefSeq, Oct 2012]



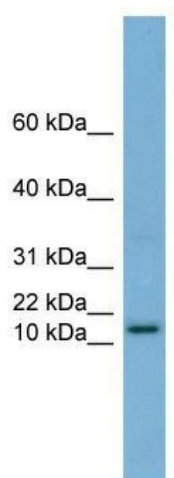
[View online »](#)

Synonyms: DP5; HAKAKIRI

Note: Immunogen Sequence Homology: Dog: 100%; Human: 100%; Bovine: 100%; Rabbit: 100%; Rat: 83%; Mouse: 83%

Protein Families: Druggable Genome, Transmembrane

Product images:



WB Suggested Anti-HRK Antibody Titration: 0.2-1 ug/ml; ELISA Titer: 1: 1562500; Positive Control: Human Thymus