

Product datasheet for **TA339372**

Lamin B2 (LMNB2) Rabbit Polyclonal Antibody

Product data:

Product Type:	Primary Antibodies
Applications:	WB
Recommended Dilution:	WB
Reactivity:	Human
Host:	Rabbit
Isotype:	IgG
Clonality:	Polyclonal
Immunogen:	The immunogen for anti-LMNB2 antibody: synthetic peptide directed towards the middle region of human LMNB2. Synthetic peptide located within the following region: EVAMRTVKKSSVMRENENGEAAAAAAAAEFGEEDLFHQQGDPRTTSRGCYVM
Formulation:	Liquid. Purified antibody supplied in 1x PBS buffer with 0.09% (w/v) sodium azide and 2% sucrose. <i>Note that this product is shipped as lyophilized powder to China customers.</i>
Concentration:	lot specific
Purification:	Protein A purified
Conjugation:	Unconjugated
Storage:	Store at -20°C as received.
Stability:	Stable for 12 months from date of receipt.
Predicted Protein Size:	68 kDa
Gene Name:	lamin B2
Database Link:	NP_116126 Entrez Gene 84823 Human Q03252



[View online »](#)

Background:

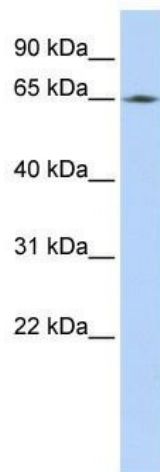
This gene encodes a B type nuclear lamin. The nuclear lamina consists of a two-dimensional matrix of proteins located next to the inner nuclear membrane. The lamin family of proteins make up the matrix and are highly conserved in evolution. During mitosis, the lamina matrix is reversibly disassembled as the lamin proteins are phosphorylated. Lamin proteins are thought to be involved in nuclear stability, chromatin structure and gene expression. Vertebrate lamins consist of two types, A and B. Mutations in this gene are associated with acquired partial lipodystrophy. [provided by RefSeq, May 2012]

Synonyms:

EPM9; LAMB2; LMN2

Note:

Immunogen Sequence Homology: Dog: 100%; Pig: 100%; Rat: 100%; Horse: 100%; Human: 100%; Mouse: 100%; Bovine: 100%; Guinea pig: 100%; Zebrafish: 85%; Rabbit: 83%

Product images:

WB Suggested Anti-LMNB2 Antibody Titration:
0.2-1 ug/ml; ELISA Titer: 1: 62500; Positive
Control: Jurkat cell lysate LMNB2 is supported by
BioGPS gene expression data to be expressed in
Jurkat