

Product datasheet for **TA339370**

SLD5 (GINS4) Rabbit Polyclonal Antibody

Product data:

Product Type:	Primary Antibodies
Applications:	WB
Recommended Dilution:	WB
Reactivity:	Human
Host:	Rabbit
Isotype:	IgG
Clonality:	Polyclonal
Immunogen:	The immunogen for Anti-GINS4 antibody is: synthetic peptide directed towards the N-terminal region of Human GINS4. Synthetic peptide located within the following region: TEEVDFLGQSDGGSEEVWLTPELIERLEQAWMNEKFAPELLESKPEIV
Formulation:	Liquid. Purified antibody supplied in 1x PBS buffer with 0.09% (w/v) sodium azide and 2% sucrose. <i>Note that this product is shipped as lyophilized powder to China customers.</i>
Concentration:	lot specific
Purification:	Protein A purified
Conjugation:	Unconjugated
Storage:	Store at -20°C as received.
Stability:	Stable for 12 months from date of receipt.
Predicted Protein Size:	26 kDa
Gene Name:	GINS complex subunit 4
Database Link:	NP_115712 Entrez Gene 84296 Human Q9BRT9



[View online »](#)

Background:

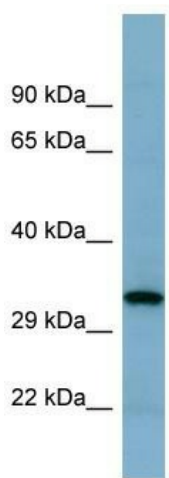
The yeast heterotetrameric GINS complex is made up of Sld5, Psf1 (GINS1; MIM 610608), Psf2 (GINS2; MIM 610609), and Psf3 (GINS3; MIM 610610). The formation of the GINS complex is essential for the initiation of DNA replication in yeast and *Xenopus* egg extracts (Ueno et al., 2005 [PubMed 16287864]). See GINS1 for additional information about the GINS complex. [supplied by OMIM, Mar 2008]. Sequence Note: This RefSeq record was created from transcript and genomic sequence data to make the sequence consistent with the reference genome assembly. The genomic coordinates used for the transcript record were based on transcript alignments. ##Evidence-Data-START## Transcript exon combination :: AK095334.1, BC005995.1 [ECO:0000332] RNAseq introns :: single sample supports all introns ERS025087, ERS025093 [ECO:0000348] ##Evidence-Data-END## COMPLETENESS: complete on the 3' end.

Synonyms:

SLD5

Note:

Immunogen Sequence Homology: Human: 100%; Mouse: 80%; Pig: 79%; Horse: 79%; Bovine: 79%; Guinea pig: 79%

Product images:

Host: Rabbit
Target Name: GINS4
Sample Tissue: THP-1 Cell Lysate
Antibody Dilution: 1.0 µg/ml

Host: Rabbit; Target Name: GINS4; Sample Tissue: THP-1 Whole Cell lysates; Antibody Dilution: 1.0 µg/ml