

Product datasheet for **TA339369**

CDT1 Rabbit Polyclonal Antibody

Product data:

Product Type:	Primary Antibodies
Applications:	IHC, WB
Recommended Dilution:	WB, IHC
Reactivity:	Human, Rat, Mouse
Host:	Rabbit
Isotype:	IgG
Clonality:	Polyclonal
Immunogen:	The immunogen for anti-CDT1 antibody: synthetic peptide directed towards the C terminal of human CDT1. Synthetic peptide located within the following region: PATPPATPPAASPSALKGVSQDLLERIRAKEAQKQLAQMTRCPEQEQLQ
Formulation:	Liquid. Purified antibody supplied in 1x PBS buffer with 0.09% (w/v) sodium azide and 2% sucrose. <i>Note that this product is shipped as lyophilized powder to China customers.</i>
Concentration:	lot specific
Purification:	Protein A purified
Conjugation:	Unconjugated
Storage:	Store at -20°C as received.
Stability:	Stable for 12 months from date of receipt.
Predicted Protein Size:	60 kDa
Gene Name:	chromatin licensing and DNA replication factor 1
Database Link:	NP_112190 Entrez Gene 67177 Mouse Entrez Gene 292071 Rat Entrez Gene 81620 Human Q9H211
Background:	The protein encoded by this gene is involved in the formation of the pre-replication complex that is necessary for DNA replication. The encoded protein can bind geminin, which prevents replication and may function to prevent this protein from initiating replication at inappropriate origins. Phosphorylation of this protein by cyclin A-dependent kinases results in degradation of the protein. [provided by RefSeq, Mar 2011]



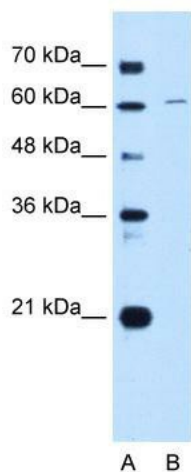
[View online »](#)

Synonyms: DUP; RIS2

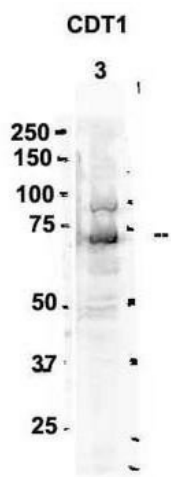
Note: Immunogen Sequence Homology: Pig: 100%; Rat: 100%; Human: 100%; Mouse: 100%; Bovine: 93%; Rabbit: 93%; Yeast: 85%; Dog: 77%

Protein Families: Stem cell - Pluripotency

Product images:

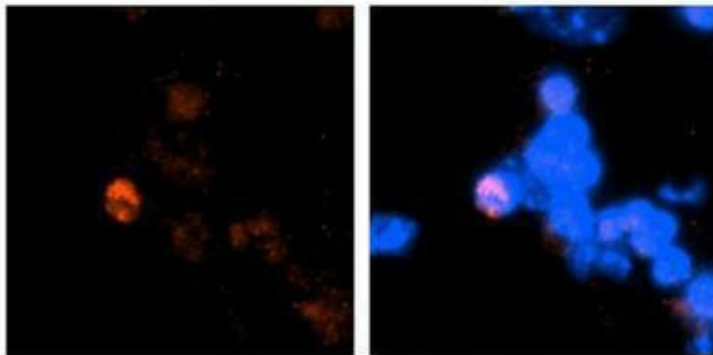


WB Suggested Anti-CDT1 Antibody Titration: 0.2-1 ug/ml; Positive Control: HepG2 cell lysate



Sample Type: 3. rat brain extract (80ug); Primary Antibody Dilution: 2 ug/ml; Secondary Antibody: IRDye 800CW goat anti-rabbit from Li-COR Bioscience; Secondary Antibody Dilution: 1: 20, 000; Image Submitted by: Yuzhi Chen; University of Arkansas for Medi

CDT1



Antibody--RED
DAPI--Blue

HC Suggested Anti-CDT1 antibody; Titration: 2 ug/ml; Positive Control: Mouse brain stem cells