

## Product datasheet for **TA339368**

### LANPL (ANP32E) Rabbit Polyclonal Antibody

#### Product data:

Product Type:	Primary Antibodies
Applications:	IHC, WB
Recommended Dilution:	WB, IHC
Reactivity:	Human
Host:	Rabbit
Isotype:	IgG
Clonality:	Polyclonal
Immunogen:	The immunogen for anti-ANP32E antibody: synthetic peptide directed towards the middle region of human ANP32E. Synthetic peptide located within the following region: EDNEAPDSEEEDEDEDGDEDDEEEENEAGPPEGYEEEEEEEEDEDEDE
Formulation:	Liquid. Purified antibody supplied in 1x PBS buffer with 0.09% (w/v) sodium azide and 2% sucrose.
Concentration:	lot specific
Purification:	Protein A purified
Conjugation:	Unconjugated
Storage:	Store at -20°C as received.
Stability:	Stable for 12 months from date of receipt.
Predicted Protein Size:	31 kDa
Gene Name:	acidic nuclear phosphoprotein 32 family member E
Database Link:	<a href="#">NP_112182</a> <a href="#">Entrez Gene 81611 Human</a> <a href="#">Q9BTT0</a>
Background:	ANP32E inhibits activity of protein phosphatase 2A (PP2A). It does not inhibit protein phosphatase 1. It may play a role in cerebellar development and synaptogenesis process by modulating PP2A activity.
Synonyms:	LANP-L; LANPL

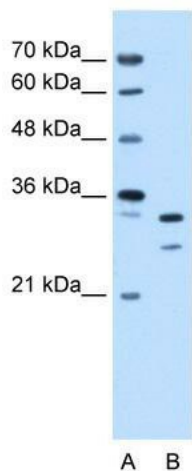


[View online »](#)

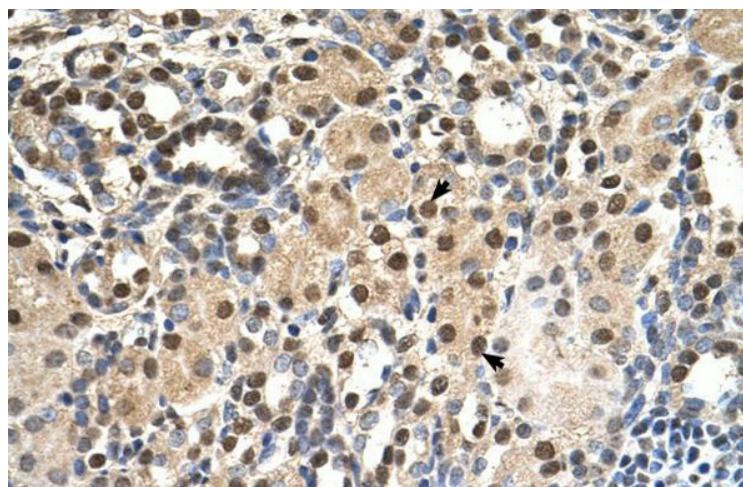
**Note:** Immunogen Sequence Homology: Dog: 100%; Rat: 100%; Horse: 100%; Human: 100%; Bovine: 100%; Rabbit: 100%; Pig: 93%; Mouse: 93%; Guinea pig: 93%; Yeast: 82%; Zebrafish: 79%

**Protein Families:** Druggable Genome

**Product images:**



WB Suggested Anti-ANP32E Antibody Titration: 0.25 ug/ml; Positive Control: HepG2 cell lysate



Human kidney