

Product datasheet for **TA339361**

Nup37 Rabbit Polyclonal Antibody

Product data:

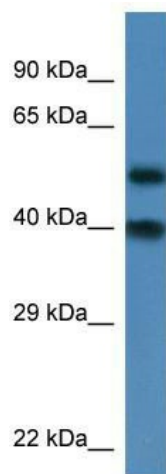
Product Type:	Primary Antibodies
Applications:	WB
Recommended Dilution:	WB
Reactivity:	Mouse
Host:	Rabbit
Isotype:	IgG
Clonality:	Polyclonal
Immunogen:	The immunogen for anti-Nup37 antibody: synthetic peptide corresponding to a region of Mouse. Synthetic peptide located within the following region: EEETDIEGIQYKTLRTFHHGVRVDGIAWSPETKLDLPPVIKFACTSAADL
Formulation:	Liquid. Purified antibody supplied in 1x PBS buffer with 0.09% (w/v) sodium azide and 2% sucrose.
Concentration:	lot specific
Purification:	Protein A purified
Conjugation:	Unconjugated
Storage:	Store at -20°C as received.
Stability:	Stable for 12 months from date of receipt.
Predicted Protein Size:	37 kDa
Gene Name:	nucleoporin 37
Database Link:	NP_081467 Entrez Gene 69736 Mouse Q9CWU9
Background:	Component of the Nup107-160 subcomplex of the nuclear pore complex (NPC). The Nup107-160 subcomplex is required for the assembly of a functional NPC. The Nup107-160 subcomplex is also required for normal kinetochore microtubule attachment, mitotic progression and chromosome segregation.
Synonyms:	FLJ22618; MGC5585; p37



[View online »](#)

Note: Immunogen Sequence Homology: Pig: 100%; Rat: 100%; Horse: 100%; Human: 100%; Mouse: 100%; Bovine: 100%; Guinea pig: 100%; Dog: 93%; Rabbit: 79%

Product images:



WB Suggested Anti-Nup37 Antibody; Titration: 1.0 ug/ml; Positive Control: Mouse Heart