

Product datasheet for **TA339360**

CENPM Rabbit Polyclonal Antibody

Product data:

Product Type:	Primary Antibodies
Applications:	IF, WB
Recommended Dilution:	WB, IF
Reactivity:	Human
Host:	Rabbit
Isotype:	IgG
Clonality:	Polyclonal
Immunogen:	The immunogen for anti-CENPM antibody: synthetic peptide directed towards the middle region of human CENPM. Synthetic peptide located within the following region: CDLEVEGFRATMAQRLVRLQICAGHVPGVSA LNLLSLLRSSEGPSLEDL
Formulation:	Liquid. Purified antibody supplied in 1x PBS buffer with 0.09% (w/v) sodium azide and 2% sucrose.
Concentration:	lot specific
Purification:	Protein A purified
Conjugation:	Unconjugated
Storage:	Store at -20°C as received.
Stability:	Stable for 12 months from date of receipt.
Predicted Protein Size:	20 kDa
Gene Name:	centromere protein M
Database Link:	NP_076958 Entrez Gene 79019 Human Q9NSP4



[View online »](#)

Background:

The centromere is a specialized chromatin domain, present throughout the cell cycle, that acts as a platform on which the transient assembly of the kinetochore occurs during mitosis. All active centromeres are characterized by the presence of long arrays of nucleosomes in which CENPA (MIM 117139) replaces histone H3 (see MIM 601128). CENPM is an additional factor required for centromere assembly (Foltz et al., 2006 [PubMed 16622419]). [supplied by OMIM, Mar 2008]. Transcript Variant: This variant (3) contains a distinct 5' UTR and lacks an in-frame portion of the 5' coding region, compared to variant 1. These differences cause translation initiation at a downstream AUG and an isoform (c) with a shorter N-terminus compared to isoform a. Publication Note: This RefSeq record includes a subset of the publications that are available for this gene. Please see the Gene record to access additional publications. ##Evidence-Data-START## Transcript exon combination :: EU035297.1, BU564454.1 [ECO:0000332] RNAseq introns :: single sample supports all introns ERS025083, ERS025089 [ECO:0000348] ##Evidence-Data-END##

Synonyms:

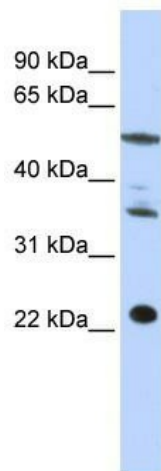
C22orf18; CENP-M; PANE1

Note:

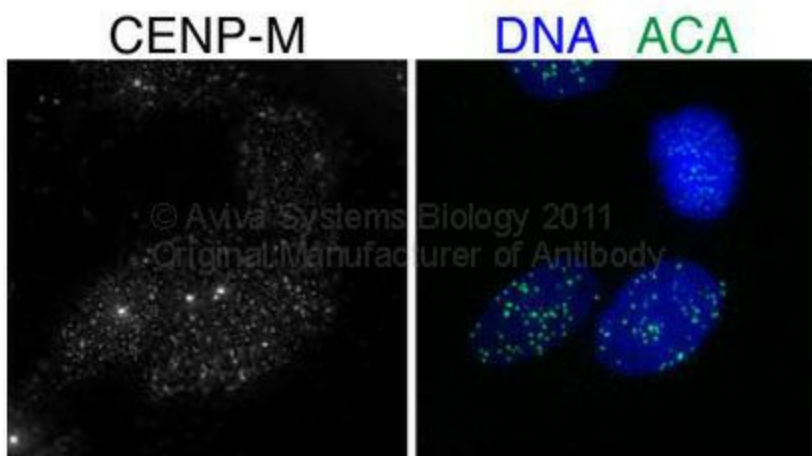
Immunogen Sequence Homology: Human: 100%; Pig: 93%; Horse: 93%; Rabbit: 93%; Dog: 79%; Bovine: 79%

Protein Families:

Druggable Genome

Product images:

WB Suggested Anti-CENPM Antibody Titration:
0.2-1 ug/ml; ELISA Titer: 1: 312500; Positive
Control: HepG2 cell lysate



Sample Type: DNA/ACA;