

Product datasheet for **TA339359**

NT5DC2 Rabbit Polyclonal Antibody

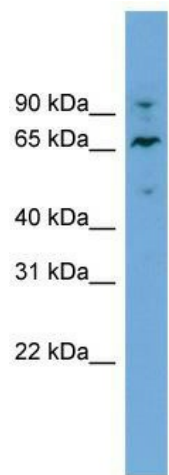
Product data:

Product Type:	Primary Antibodies
Applications:	WB
Recommended Dilution:	WB
Reactivity:	Human
Host:	Rabbit
Isotype:	IgG
Clonality:	Polyclonal
Immunogen:	The immunogen for anti-NT5DC2 antibody: synthetic peptide directed towards the N terminal of human NT5DC2. Synthetic peptide located within the following region: IRKYDYNPSFAIRGLHYDIQKSLMKIDAFHYVQLGTAYRGLQVPDEEV
Formulation:	Liquid. Purified antibody supplied in 1x PBS buffer with 0.09% (w/v) sodium azide and 2% sucrose.
Concentration:	lot specific
Purification:	Protein A purified
Conjugation:	Unconjugated
Storage:	Store at -20°C as received.
Stability:	Stable for 12 months from date of receipt.
Predicted Protein Size:	61
Gene Name:	5'-nucleotidase domain containing 2
Database Link:	NP_075059 Entrez Gene 64943 Human Q9H857
Background:	The function of this protein remains unknown.
Synonyms:	FLJ12442
Note:	Immunogen Sequence Homology: Dog: 100%; Pig: 100%; Rat: 100%; Horse: 100%; Human: 100%; Bovine: 100%; Rabbit: 100%; Guinea pig: 100%; Mouse: 86%; Zebrafish: 79%



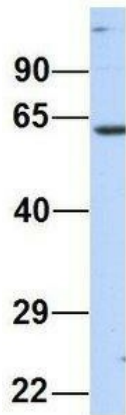
[View online »](#)

Product images:



WB Suggested Anti-NT5DC2 Antibody Titration:
0.2-1 ug/ml; Positive Control: HT1080 cell lysate

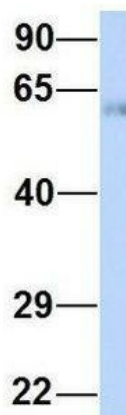
NT5DC2



Rabbit Anti-NT5DC2
Sample Type: Human Adult
Placenta
Antibody Concentration: 1ug/mL

Host: Rabbit; Target Name: NT5DC2; Sample
Tissue: Human Adult Placenta; Antibody Dilution:
1.0 ug/ml

NT5DC2



Rabbit Anti-NT5DC2
Sample Type: Human Fetal
Heart
Antibody Concentration: 1ug/mL

Host: Rabbit; Target Name: NT5DC2; Sample
Tissue: Human Fetal Heart; Antibody Dilution: 1.0
ug/ml

