

## Product datasheet for **TA339358**

### NOC3L Rabbit Polyclonal Antibody

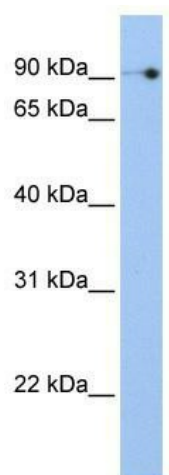
#### Product data:

Product Type:	Primary Antibodies
Applications:	WB
Recommended Dilution:	WB
Reactivity:	Human
Host:	Rabbit
Isotype:	IgG
Clonality:	Polyclonal
Immunogen:	The immunogen for anti-NOC3L antibody: synthetic peptide directed towards the N terminal of human NOC3L. Synthetic peptide located within the following region: TLKKYRKEQRKLRQAVKDAVSKKPIPLENPKEKRPKGKRIEREEEEEEAL
Formulation:	Liquid. Purified antibody supplied in 1x PBS buffer with 0.09% (w/v) sodium azide and 2% sucrose. <i>Note that this product is shipped as lyophilized powder to China customers.</i>
Concentration:	lot specific
Purification:	Protein A purified
Conjugation:	Unconjugated
Storage:	Store at -20°C as received.
Stability:	Stable for 12 months from date of receipt.
Predicted Protein Size:	92 kDa
Gene Name:	NOC3 like DNA replication regulator
Database Link:	<a href="#">NP_071896</a> <a href="#">Entrez Gene 64318 Human</a> <a href="#">Q8WTT2</a>
Background:	May be required for adipogenesis.
Synonyms:	AD24; C10orf117; FAD24
Note:	Immunogen Sequence Homology: Dog: 100%; Pig: 100%; Rat: 100%; Horse: 100%; Human: 100%; Mouse: 100%; Bovine: 100%; Rabbit: 100%; Guinea pig: 100%



[View online »](#)

## Product images:



WB Suggested Anti-NOC3L Antibody Titration:  
0.2-1 ug/ml; Positive Control: Transfected 293T