

Product datasheet for **TA339356**

MCCC2 Rabbit Polyclonal Antibody

Product data:

Product Type:	Primary Antibodies
Applications:	WB
Recommended Dilution:	WB
Reactivity:	Human
Host:	Rabbit
Isotype:	IgG
Clonality:	Polyclonal
Immunogen:	The immunogen for Anti-MCCC2 antibody is: synthetic peptide directed towards the C-terminal region of Human MCCC2. Synthetic peptide located within the following region: RKVVRNLNYQKKLDVTIEPSEEPLFPADELYGIVGANLKR SFDVREVIAR
Formulation:	Liquid. Purified antibody supplied in 1x PBS buffer with 0.09% (w/v) sodium azide and 2% sucrose. <i>Note that this product is shipped as lyophilized powder to China customers.</i>
Concentration:	lot specific
Purification:	Protein A purified
Conjugation:	Unconjugated
Storage:	Store at -20°C as received.
Stability:	Stable for 12 months from date of receipt.
Predicted Protein Size:	36 kDa
Gene Name:	methylcrotonoyl-CoA carboxylase 2
Database Link:	NP_071415 Entrez Gene 64087 Human Q9HCC0
Background:	This gene encodes the small subunit of 3-methylcrotonyl-CoA carboxylase. This enzyme functions as a heterodimer and catalyzes the carboxylation of 3-methylcrotonyl-CoA to form 3-methylglutaconyl-CoA. Mutations in this gene are associated with 3-Methylcrotonylglycinuria, an autosomal recessive disorder of leucine catabolism. [provided by RefSeq, Jul 2008]



[View online »](#)

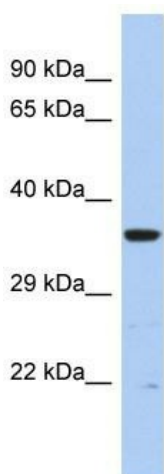
Synonyms: MCCB

Note: Immunogen Sequence Homology: Human: 100%; Mouse: 100%; Dog: 93%; Pig: 93%; Rat: 93%; Bovine: 93%; Rabbit: 93%; Guinea pig: 93%; Horse: 86%; Zebrafish: 79%

Protein Families: Druggable Genome

Protein Pathways: Metabolic pathways, Valine, leucine and isoleucine degradation

Product images:



Host: Rabbit
Target Name: MCCC2
Sample Tissue: PANC1 Cell Lysate
Antibody Dilution: 1.0 μ g/ml

Host: Rabbit; Target Name: MCCC2; Sample Tissue: PANC1 Whole cell lysates; Antibody Dilution: 1.0 ug/ml