

Product datasheet for **TA339350**

MAGEA5P Rabbit Polyclonal Antibody

Product data:

Product Type:	Primary Antibodies
Applications:	WB
Recommended Dilution:	WB
Reactivity:	Human
Host:	Rabbit
Isotype:	IgG
Clonality:	Polyclonal
Immunogen:	The immunogen for anti-MAGEA5 antibody: synthetic peptide directed towards the N terminal of human MAGEA5. Synthetic peptide located within the following region: MSLEQKSQHCKPEEGLDTQEEALGLVGVQAATTEEQEAVSSSSPLVPGTL
Formulation:	Liquid. Purified antibody supplied in 1x PBS buffer with 0.09% (w/v) sodium azide and 2% sucrose. <i>Note that this product is shipped as lyophilized powder to China customers.</i>
Concentration:	lot specific
Purification:	Protein A purified
Conjugation:	Unconjugated
Storage:	Store at -20°C as received.
Stability:	Stable for 12 months from date of receipt.
Predicted Protein Size:	13
Gene Name:	MAGE family member A5
Database Link:	NP_066387 Entrez Gene 4104 Human P43359



[View online »](#)

Background:

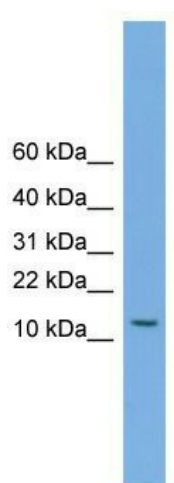
This gene is a member of the MAGEA gene family. The members of this family encode proteins with 50 to 80% sequence identity to each other. The promoters and first exons of the MAGEA genes show considerable variability, suggesting that the existence of this gene family enables the same function to be expressed under different transcriptional controls. The MAGEA genes are clustered at chromosomal location Xq28. They have been implicated in some hereditary disorders, such as dyskeratosis congenita. This MAGEA gene encodes a protein that is C-terminally truncated compared to other family members, and this gene can be alternatively interpreted to be a pseudogene. The protein is represented in this Gene record in accordance with the assumed protein-coding status defined in the literature. Read-through transcription exists between this gene and the upstream melanoma antigen family A, 10 (MAGEA10) gene. [provided by RefSeq, Oct 2011]

Synonyms:

CT1.5; MAGE5; MAGEA4

Note:

Immunogen Sequence Homology: Human: 100%

Product images:

WB Suggested Anti-MAGEA5 Antibody Titration:
0.2-1 ug/ml; ELISA Titer: 1: 12500; Positive
Control: HT1080 cell lysate. MAGEA5 is supported
by BioGPS gene expression data to be expressed
in HT1080