

Product datasheet for **TA339349**

NIT2 Rabbit Polyclonal Antibody

Product data:

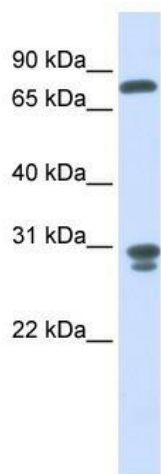
Product Type:	Primary Antibodies
Applications:	WB
Recommended Dilution:	WB
Reactivity:	Human
Host:	Rabbit
Isotype:	IgG
Clonality:	Polyclonal
Immunogen:	The immunogen for anti-NIT2 antibody: synthetic peptide directed towards the middle region of human NIT2. Synthetic peptide located within the following region: VAKECSIYLIGGSIPEEDAGKLYNTCAVFGPDGTLLAKYRKIHLFDIDVP
Formulation:	Liquid. Purified antibody supplied in 1x PBS buffer with 0.09% (w/v) sodium azide and 2% sucrose. <i>Note that this product is shipped as lyophilized powder to China customers.</i>
Concentration:	lot specific
Purification:	Protein A purified
Conjugation:	Unconjugated
Storage:	Store at -20°C as received.
Stability:	Stable for 12 months from date of receipt.
Predicted Protein Size:	30 kDa
Gene Name:	nitrilase family member 2
Database Link:	NP_064587 Entrez Gene 56954 Human Q9NQR4
Background:	NIT2 belongs to the UPF0012 family and contains 1 CN hydrolase domain. Overexpression of NIT2 decreases the colony-forming capacity of cultured cells by arresting cells in the G2 phase of the cell cycle.
Synonyms:	HEL-S-8a



[View online »](#)

Note: Immunogen Sequence Homology: Dog: 100%; Pig: 100%; Rat: 100%; Horse: 100%; Human: 100%; Mouse: 100%; Rabbit: 100%; Guinea pig: 100%; Bovine: 93%; Zebrafish: 93%; Yeast: 79%

Product images:



WB Suggested Anti-NIT2 Antibody Titration: 0.2-1 ug/ml; ELISA Titer: 1: 1562500; Positive Control: Human Liver