

Product datasheet for TA339345

CEP55 Rabbit Polyclonal Antibody

Product data:

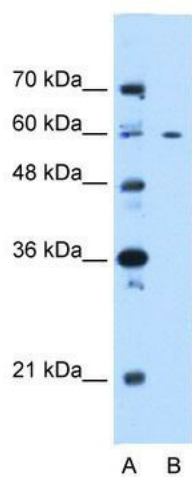
Product Type:	Primary Antibodies
Applications:	WB
Recommended Dilution:	WB
Reactivity:	Human
Host:	Rabbit
Isotype:	IgG
Clonality:	Polyclonal
Immunogen:	The immunogen for anti-CEP55 antibody: synthetic peptide directed towards the N terminal of human CEP55. Synthetic peptide located within the following region: MSSRSTKDLIKSKWGSKPSNSKSETTLEKLKGEIAHLKTSVDEITSGK GK
Formulation:	Liquid. Purified antibody supplied in 1x PBS buffer with 0.09% (w/v) sodium azide and 2% sucrose. <i>Note that this product is shipped as lyophilized powder to China customers.</i>
Concentration:	lot specific
Purification:	Protein A purified
Conjugation:	Unconjugated
Storage:	Store at -20°C as received.
Stability:	Stable for 12 months from date of receipt.
Predicted Protein Size:	54 kDa
Gene Name:	centrosomal protein 55
Database Link:	NP_060601 Entrez Gene 55165 Human Q53EZ4
Background:	CEP55 plays a role in mitotic exit and cytokinesis. Not required for microtubule nucleation.
Synonyms:	C10orf3; CT111; URCC6
Note:	Immunogen Sequence Homology: Human: 100%; Pig: 92%; Bovine: 92%; Dog: 86%; Rat: 86%; Guinea pig: 86%; Rabbit: 85%; Horse: 79%



[View online »](#)

Protein Families: Druggable Genome

Product images:



WB Suggested Anti-CEP55 Antibody Titration: 0.2-1 ug/ml; Positive Control: 721_B cell lysate. CEP55 is supported by BioGPS gene expression data to be expressed in 721_B