

Product datasheet for **TA339343**

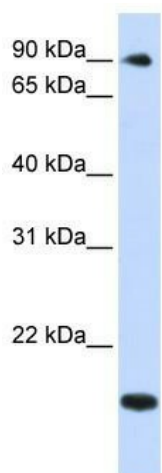
TSR1 Rabbit Polyclonal Antibody

Product data:

Product Type:	Primary Antibodies
Applications:	WB
Recommended Dilution:	WB
Reactivity:	Human
Host:	Rabbit
Isotype:	IgG
Clonality:	Polyclonal
Immunogen:	The immunogen for anti-TSR1 antibody: synthetic peptide directed towards the middle region of human TSR1. Synthetic peptide located within the following region: MALVATVYAPITFPPASVLLFKQKSNGMHSLIATGHLMSVDPDRMVIKRV
Formulation:	Liquid. Purified antibody supplied in 1x PBS buffer with 0.09% (w/v) sodium azide and 2% sucrose. <i>Note that this product is shipped as lyophilized powder to China customers.</i>
Concentration:	lot specific
Purification:	Protein A purified
Conjugation:	Unconjugated
Storage:	Store at -20°C as received.
Stability:	Stable for 12 months from date of receipt.
Predicted Protein Size:	92 kDa
Gene Name:	TSR1, ribosome maturation factor
Database Link:	NP_060598 Entrez Gene 55720 Human Q2NL82
Background:	Required during maturation of the 40S ribosomal subunit in the nucleolus.
Synonyms:	FLJ10534; KIAA1401; MGC131829
Note:	Immunogen Sequence Homology: Dog: 100%; Pig: 100%; Rat: 100%; Horse: 100%; Human: 100%; Mouse: 100%; Bovine: 100%; Rabbit: 100%; Guinea pig: 100%; Zebrafish: 77%



[View online »](#)

Product images:

WB Suggested Anti-TSR1 Antibody Titration: 0.2-1 ug/ml; ELISA Titer: 1: 312500; Positive Control: Human heart