

Product datasheet for TA339337

CDT2 (DTL) Rabbit Polyclonal Antibody

Product data:

Product Type:	Primary Antibodies
Applications:	WB
Recommended Dilution:	WB
Reactivity:	Human
Host:	Rabbit
Isotype:	IgG
Clonality:	Polyclonal
Immunogen:	The immunogen for anti-DTL antibody: synthetic peptide directed towards the N terminal of human DTL. Synthetic peptide located within the following region: VNQISGAHNTSDKQTPSKPKKKQNSKGLAPSVDFQQSVTVVLFQDENTLV
Formulation:	Liquid. Purified antibody supplied in 1x PBS buffer with 0.09% (w/v) sodium azide and 2% sucrose. <i>Note that this product is shipped as lyophilized powder to China customers.</i>
Concentration:	lot specific
Purification:	Protein A purified
Conjugation:	Unconjugated
Storage:	Store at -20°C as received.
Stability:	Stable for 12 months from date of receipt.
Predicted Protein Size:	79 kDa
Gene Name:	denticleless E3 ubiquitin protein ligase homolog
Database Link:	NP_057532 Entrez Gene 51514 Human Q9NZJ0
Background:	DTL is required for CDT1 proteolysis in response to DNA damage through the CUL4-DDB1 E3 ubiquitin-protein ligase. It seems to be necessary to ensure proper cell cycle regulation of DNA replication. DTL may function as a substrate receptor for CUL4-DDB1 E3 ubiquitin-protein ligase complex. It also may play a role in cell proliferation of NT2 embryonal carcinoma cells.



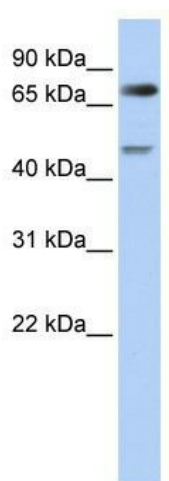
[View online »](#)

Synonyms: CDT2; DCAF2; L2DTL; RAMP

Note: Immunogen Sequence Homology: Dog: 100%; Pig: 100%; Rat: 100%; Horse: 100%; Human: 100%; Mouse: 100%; Bovine: 100%; Guinea pig: 100%; Rabbit: 86%

Protein Families: Druggable Genome

Product images:



WB Suggested Anti-DTL Antibody Titration: 0.2-1 ug/ml; ELISA Titer: 1: 62500; Positive Control: 721_B cell lysate. DTL is supported by BioGPS gene expression data to be expressed in 721_B