

Product datasheet for **TA339336**

NUSAP1 Rabbit Polyclonal Antibody

Product data:

Product Type:	Primary Antibodies
Applications:	WB
Recommended Dilution:	WB
Reactivity:	Human
Host:	Rabbit
Isotype:	IgG
Clonality:	Polyclonal
Immunogen:	The immunogen for anti-NUSAP1 antibody: synthetic peptide directed towards the C terminal of human NUSAP1. Synthetic peptide located within the following region: LKASLSRPLNYEPHKGKLPWGQSKENNYLNQHVNRIIFYKKTYPKQPHLQ
Formulation:	Liquid. Purified antibody supplied in 1x PBS buffer with 0.09% (w/v) sodium azide and 2% sucrose. <i>Note that this product is shipped as lyophilized powder to China customers.</i>
Concentration:	lot specific
Purification:	Protein A purified
Conjugation:	Unconjugated
Storage:	Store at -20°C as received.
Stability:	Stable for 12 months from date of receipt.
Predicted Protein Size:	25 kDa
Gene Name:	nucleolar and spindle associated protein 1
Database Link:	NP_057443 Entrez Gene 51203 Human Q9BXS6



[View online »](#)

Background:

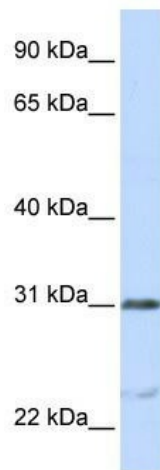
NUSAP1 is a nucleolar-spindle-associated protein that plays a role in spindle microtubule organization (Raemaekers et al., 2003 [PubMed 12963707]). [supplied by OMIM, Jun 2009].
Transcript Variant: This variant (7) uses an alternate in-frame splice site in the 5' coding region, compared to variant 1, resulting in an isoform (7) that is 1 aa shorter than isoform 1.
##Evidence-Data-START## Transcript exon combination :: BC012887.1 [ECO:0000332]
##Evidence-Data-END## COMPLETENESS: complete on the 3' end.

Synonyms:

ANKT; BM037; LNP; NUSAP; PRO0310p1; Q0310; SAPL

Note:

Immunogen Sequence Homology: Dog: 100%; Pig: 100%; Horse: 100%; Human: 100%; Bovine: 100%; Rabbit: 100%; Guinea pig: 100%; Rat: 93%; Mouse: 93%; Zebrafish: 86%

Product images:

WB Suggested Anti-NUSAP1 Antibody Titration:
0.2-1 ug/ml; ELISA Titer: 1: 312500; Positive
Control: Jurkat cell lysate. NUSAP1 is strongly
supported by BioGPS gene expression data to be
expressed in Human Jurkat cells