

Product datasheet for **TA339335**

WBP11 Rabbit Polyclonal Antibody

Product data:

Product Type:	Primary Antibodies
Applications:	IHC, IP, WB
Recommended Dilution:	WB, IP
Reactivity:	Human, Mouse
Host:	Rabbit
Isotype:	IgG
Clonality:	Polyclonal
Immunogen:	The immunogen for anti-WBP11 antibody: synthetic peptide directed towards the N terminal of human WBP11. Synthetic peptide located within the following region: GRRSTSSTKSGKFMNPTDQARKEARKRELKKNKKQRMMVRAAVLKMKDPK
Formulation:	Liquid. Purified antibody supplied in 1x PBS buffer with 0.09% (w/v) sodium azide and 2% sucrose. <i>Note that this product is shipped as lyophilized powder to China customers.</i>
Concentration:	lot specific
Purification:	Protein A purified
Conjugation:	Unconjugated
Storage:	Store at -20°C as received.
Stability:	Stable for 12 months from date of receipt.
Predicted Protein Size:	70 kDa
Gene Name:	WW domain binding protein 11
Database Link:	NP_057396 Entrez Gene 60321 Mouse Entrez Gene 51729 Human Q9Y2W2



[View online »](#)

Background:

This gene encodes a nuclear protein, which colocalizes with mRNA splicing factors and intermediate filament-containing perinuclear networks. This protein has 95% amino acid sequence identity to the mouse Wbp11 protein. It contains two proline-rich regions that bind to the WW domain of Npw38, a nuclear protein, and thus this protein is also called Npw38-binding protein NpwBP. The Npw38-NpwBP complex may function as a component of an mRNA factory in the nucleus. [provided by RefSeq, Jul 2008]

Synonyms:

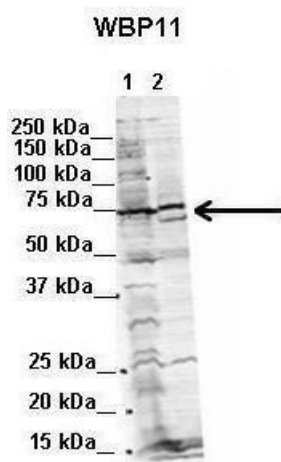
NPWBP; PPP1R165; SIPP1; WBP-11

Note:

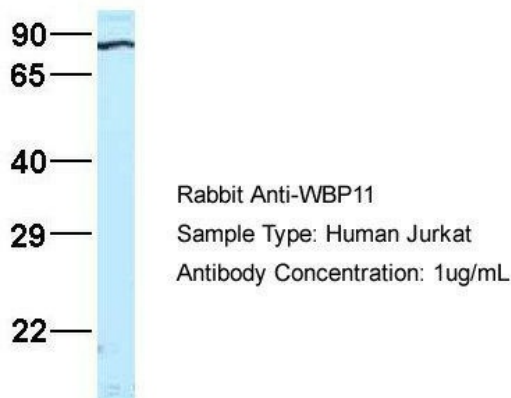
Immunogen Sequence Homology: Dog: 100%; Pig: 100%; Rat: 100%; Horse: 100%; Human: 100%; Mouse: 100%; Rabbit: 100%; Zebrafish: 100%; Guinea pig: 100%; Bovine: 93%

Protein Pathways:

Spliceosome

Product images:


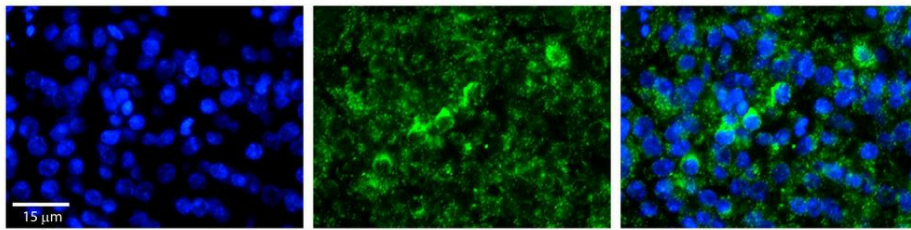
Lanes: 1. Human NT-2 cells (60ug) lysate 2. Mouse WT brain extract (80ug); Primary Antibody Dilution: 2 ug/ml; Secondary Antibody: IRDye 800CW goat anti-rabbit from Li-COR Bioscience; Secondary Antibody Dilution: 1: 20, 000; Gene Name: WBP11; Submitted by

WBP11


Host: Rabbit; Target Name: WBP11; Sample Tissue: Jurkat; Antibody Dilution: 1.0 ug/ml. WBP11 is strongly supported by BioGPS gene expression data to be expressed in Jurkat

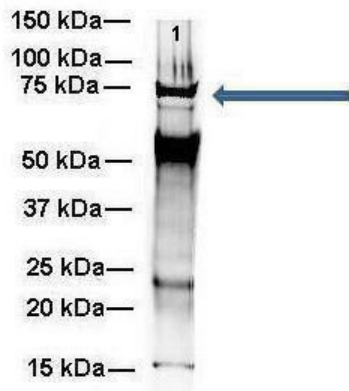


WB Suggested Anti-WBP11 Antibody Titration: 0.2-1 ug/ml; ELISA Titer: 1: 12500; Positive Control: Hela cell lysate. WBP11 is strongly supported by BioGPS gene expression data to be expressed in Human HeLa cells



Rabbit Anti-WBP11 Antibody; Formalin Fixed Paraffin Embedded Tissue: Human Pineal Tissue; Observed Staining: Cytoplasmic in cell bodies of pinealocytes and their processes; Primary Antibody Concentration: 1: 100; Other Working Concentrations: 1/600; Secon

WBP11



Amount and Sample Type: 500 ug mouse brain homogenate; Amount of IP Antibody: 6 ug; Primary Antibody: WBP11; Primary Antibody Dilution: 1: 500; Secondary Antibody: Goat anti-rabbit Alexa-Fluor 594; Secondary Antibody Dilution: 1: 5000; Gene Name: WBP11; S