

## Product datasheet for TA339333

### C1orf33 (MRT04) Rabbit Polyclonal Antibody

#### Product data:

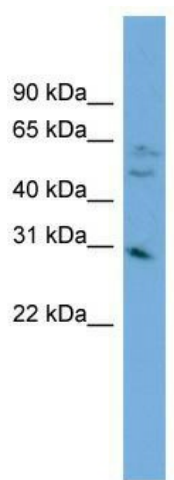
Product Type:	Primary Antibodies
Applications:	WB
Recommended Dilution:	WB
Reactivity:	Human
Host:	Rabbit
Isotype:	IgG
Clonality:	Polyclonal
Immunogen:	The immunogen for anti-MRT04 antibody: synthetic peptide directed towards the middle region of human MRT04. Synthetic peptide located within the following region: EQFPHSMEPQLRQLGLPTALKRGVVTLLSDYEVCKEGDVLTP EQARVLKL
Formulation:	Liquid. Purified antibody supplied in 1x PBS buffer with 0.09% (w/v) sodium azide and 2% sucrose.
Concentration:	lot specific
Purification:	Protein A purified
Conjugation:	Unconjugated
Storage:	Store at -20°C as received.
Stability:	Stable for 12 months from date of receipt.
Predicted Protein Size:	27
Gene Name:	MRT4 homolog, ribosome maturation factor
Database Link:	<a href="#">NP_057267</a> <a href="#">Entrez Gene 51154 Human</a> <a href="#">Q9UKD2</a>
Background:	This gene encodes a protein sharing a low level of sequence similarity with ribosomal protein P0. While the precise function of the encoded protein is currently unknown, it appears to be involved in mRNA turnover and ribosome assembly. [provided by RefSeq, Jul 2008]
Synonyms:	C1orf33; dJ657E11.4; MRT4


[View online »](#)

**Note:** Immunogen Sequence Homology: Dog: 100%; Pig: 100%; Rat: 100%; Horse: 100%; Human: 100%; Bovine: 100%; Rabbit: 100%; Guinea pig: 100%; Mouse: 93%; Zebrafish: 86%

**Protein Families:** Druggable Genome

### Product images:



WB Suggested Anti-MRT04 Antibody Titration:  
0.2-1 ug/ml; ELISA Titer: 1: 1562500; Positive  
Control: HepG2 cell lysate