

## Product datasheet for **TA339331**

### PPPDE2 (DESI1) Rabbit Polyclonal Antibody

#### Product data:

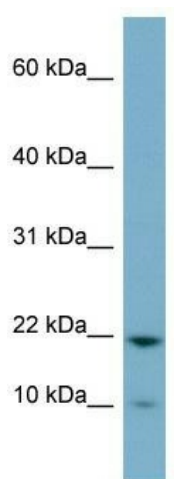
Product Type:	Primary Antibodies
Applications:	WB
Recommended Dilution:	WB
Reactivity:	Human
Host:	Rabbit
Isotype:	IgG
Clonality:	Polyclonal
Immunogen:	The immunogen for anti-D15Wsu75e antibody: synthetic peptide directed towards the middle region of human D15Wsu75e. Synthetic peptide located within the following region: FLTGRKIPSYITDLPSEVLSTPFGQALRPLLDSIQIPPGGSSVGRPNGQ
Formulation:	Liquid. Purified antibody supplied in 1x PBS buffer with 0.09% (w/v) sodium azide and 2% sucrose. <i>Note that this product is shipped as lyophilized powder to China customers.</i>
Concentration:	lot specific
Purification:	Protein A purified
Conjugation:	Unconjugated
Storage:	Store at -20°C as received.
Stability:	Stable for 12 months from date of receipt.
Predicted Protein Size:	18 kDa
Gene Name:	desumoylating isopeptidase 1
Database Link:	<a href="#">NP_056519</a> <a href="#">Entrez Gene 27351 Human</a> <a href="#">Q6ICB0</a>
Background:	Protease which deconjugates SUMO1, SUMO2 and SUMO3 from some substrate proteins. Has isopeptidase but not SUMO-processing activity. Desumoylates ZBTB46.
Synonyms:	D15Wsu75e; DeSI-1; DESI2; DJ347H13.4; FAM152B; PPPDE2



[View online »](#)

**Note:** Immunogen Sequence Homology: Human: 100%; Pig: 93%; Rat: 93%; Horse: 93%; Mouse: 93%; Bovine: 93%; Rabbit: 93%; Guinea pig: 86%; Dog: 79%

**Product images:**



WB Suggested Anti-D15Wsu75e Antibody  
Titration: 0.2-1 ug/ml; ELISA Titer: 1: 312500;  
Positive Control: OVCAR-3 cell lysate