

## Product datasheet for **TA339330**

### PIP3E (IPCEF1) Rabbit Polyclonal Antibody

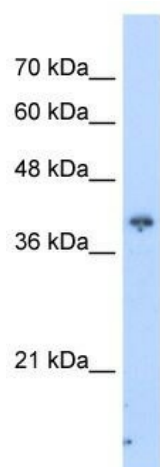
#### Product data:

Product Type:	Primary Antibodies
Applications:	WB
Recommended Dilution:	WB
Reactivity:	Human
Host:	Rabbit
Isotype:	IgG
Clonality:	Polyclonal
Immunogen:	The immunogen for anti-PIP3-E antibody: synthetic peptide directed towards the C terminal of human PIP3-E. Synthetic peptide located within the following region: DDPKLTARKYREWKMNTLLIQDIYQQRASPAPDDTDDTPQELKKSPSS
Formulation:	Liquid. Purified antibody supplied in 1x PBS buffer with 0.09% (w/v) sodium azide and 2% sucrose. <i>Note that this product is shipped as lyophilized powder to China customers.</i>
Concentration:	lot specific
Purification:	Protein A purified
Conjugation:	Unconjugated
Storage:	Store at -20°C as received.
Stability:	Stable for 12 months from date of receipt.
Predicted Protein Size:	44 kDa
Gene Name:	interaction protein for cytohesin exchange factors 1
Database Link:	<a href="#">NP_001124171</a> <a href="#">Entrez Gene 26034 Human</a> <a href="#">Q8WWN9</a>
Background:	Enhances the promotion of guanine-nucleotide exchange by PSCD2 on ARF6 in a concentration-dependent manner.
Synonyms:	PIP3-E
Note:	Immunogen Sequence Homology: Human: 100%



[View online »](#)

## Product images:



WB Suggested Anti-PIP3-E Antibody Titration: 2.5 ug/ml; Positive Control: HepG2 cell lysate