

Product datasheet for TA339329

PIP3E (IPCEF1) Rabbit Polyclonal Antibody

Product data:

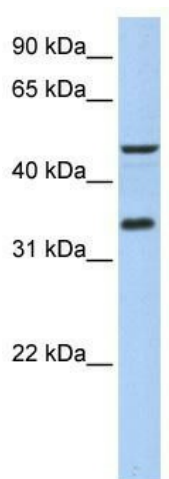
Product Type:	Primary Antibodies
Applications:	WB
Recommended Dilution:	WB
Reactivity:	Human
Host:	Rabbit
Isotype:	IgG
Clonality:	Polyclonal
Immunogen:	The immunogen for anti-PIP3-E antibody: synthetic peptide directed towards the middle region of human PIP3-E. Synthetic peptide located within the following region: IHKALENSFVTSESGFLNSLSSDDTSSLSSNHDHLTVDPKPA GSKIMDK E
Formulation:	Liquid. Purified antibody supplied in 1x PBS buffer with 0.09% (w/v) sodium azide and 2% sucrose. <i>Note that this product is shipped as lyophilized powder to China customers.</i>
Concentration:	lot specific
Purification:	Protein A purified
Conjugation:	Unconjugated
Storage:	Store at -20°C as received.
Stability:	Stable for 12 months from date of receipt.
Predicted Protein Size:	49 kDa
Gene Name:	interaction protein for cytohesin exchange factors 1
Database Link:	NP_056368 Entrez Gene 26034 Human Q8WWN9
Background:	Enhances the promotion of guanine-nucleotide exchange by PSCD2 on ARF6 in a concentration-dependent manner.
Synonyms:	PIP3-E



[View online »](#)

Note: Immunogen Sequence Homology: Human: 100%; Dog: 93%; Rat: 93%; Horse: 93%; Bovine: 93%; Rabbit: 93%; Pig: 86%; Guinea pig: 86%; Mouse: 79%

Product images:



WB Suggested Anti-PIP3-E Antibody Titration: 0.2-1 ug/ml; Positive Control: 721_B cell lysate. IPCEF1 is supported by BioGPS gene expression data to be expressed in 721_B