

Product datasheet for **TA339328**

BRRN1 (NCAPH) Rabbit Polyclonal Antibody

Product data:

Product Type:	Primary Antibodies
Applications:	WB
Recommended Dilution:	WB
Reactivity:	Human
Host:	Rabbit
Isotype:	IgG
Clonality:	Polyclonal
Immunogen:	The immunogen for anti-NCAPH antibody: synthetic peptide directed towards the C terminal of human NCAPH. Synthetic peptide located within the following region: TKDLQRSLPPVMAQNLSIPLAFACLLHLANEKNLKLEGTEDLSDVLRQG
Formulation:	Liquid. Purified antibody supplied in 1x PBS buffer with 0.09% (w/v) sodium azide and 2% sucrose. <i>Note that this product is shipped as lyophilized powder to China customers.</i>
Concentration:	lot specific
Purification:	Protein A purified
Conjugation:	Unconjugated
Storage:	Store at -20°C as received.
Stability:	Stable for 12 months from date of receipt.
Predicted Protein Size:	82 kDa
Gene Name:	non-SMC condensin I complex subunit H
Database Link:	NP_056156 Entrez Gene 23397 Human Q15003



[View online »](#)

Background:

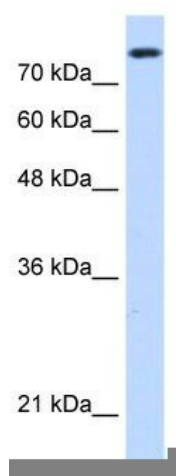
This gene encodes a member of the barr gene family and a regulatory subunit of the condensin complex. This complex is required for the conversion of interphase chromatin into condensed chromosomes. The protein encoded by this gene is associated with mitotic chromosomes, except during the early phase of chromosome condensation. During interphase, the protein has a distinct punctate nucleolar localization. Alternatively spliced transcript variants encoding different proteins have been described. [provided by RefSeq, Jul 2013]

Synonyms:

BRRN1; CAP-H

Note:

Immunogen Sequence Homology: Dog: 100%; Pig: 100%; Rat: 100%; Human: 100%; Mouse: 100%; Rabbit: 100%; Bovine: 93%; Guinea pig: 86%; Horse: 79%

Product images:

WB Suggested Anti-NCAPH Antibody Titration: 0.2-1 ug/ml; Positive Control: HepG2 cell lysate. NCAPH is supported by BioGPS gene expression data to be expressed in HepG2