

Product datasheet for **TA339325**

BOP1 Rabbit Polyclonal Antibody

Product data:

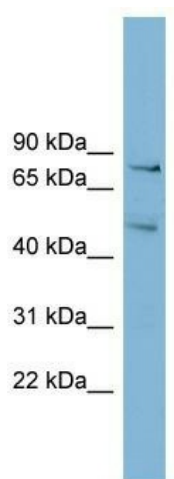
Product Type:	Primary Antibodies
Applications:	WB
Recommended Dilution:	WB
Reactivity:	Human
Host:	Rabbit
Isotype:	IgG
Clonality:	Polyclonal
Immunogen:	The immunogen for anti-BOP1 antibody: synthetic peptide directed towards the N terminal of human BOP1. Synthetic peptide located within the following region: PLLCTSPLSHSTGSDSGVSDSEESVFSGLEDSGSDSEDDDEGDEEGEDG
Formulation:	Liquid. Purified antibody supplied in 1x PBS buffer with 0.09% (w/v) sodium azide and 2% sucrose. <i>Note that this product is shipped as lyophilized powder to China customers.</i>
Concentration:	lot specific
Purification:	Protein A purified
Conjugation:	Unconjugated
Storage:	Store at -20°C as received.
Stability:	Stable for 12 months from date of receipt.
Predicted Protein Size:	83 kDa
Gene Name:	block of proliferation 1
Database Link:	NP_056016 Entrez Gene 23246 Human Q14137
Background:	BOP1 is the component of the PeBoW complex, which is required for maturation of 28S and 5.8S ribosomal RNAs and formation of the 60S ribosome.
Synonyms:	KIAA0124



[View online »](#)

Note: Immunogen Sequence Homology: Human: 100%; Pig: 91%; Yeast: 90%; Rat: 83%; Rabbit: 82%; Dog: 77%; Bovine: 77%; Horse: 75%; Guinea pig: 75%

Product images:



WB Suggested Anti-BOP1 Antibody Titration: 0.2-1 ug/ml; ELISA Titer: 1: 12500; Positive Control: HT1080 cell lysate