

## Product datasheet for **TA339323**

### SEPTIN6 Rabbit Polyclonal Antibody

#### Product data:

Product Type:	Primary Antibodies
Applications:	WB
Recommended Dilution:	WB
Reactivity:	Human
Host:	Rabbit
Isotype:	IgG
Clonality:	Polyclonal
Immunogen:	The immunogen for anti-SEPT6(septin 6) antibody: synthetic peptide directed towards the N terminal of human SEPT6(septin 6). Synthetic peptide located within the following region: TGLGKSTLMDTLFNTKFEGEPATHTQPGVQLQSNTYDLQESNVRLKLTIV
Formulation:	Liquid. Purified antibody supplied in 1x PBS buffer with 0.09% (w/v) sodium azide and 2% sucrose. <i>Note that this product is shipped as lyophilized powder to China customers.</i>
Concentration:	lot specific
Purification:	Protein A purified
Conjugation:	Unconjugated
Storage:	Store at -20°C as received.
Stability:	Stable for 12 months from date of receipt.
Predicted Protein Size:	12 kDa
Gene Name:	septin 6
Database Link:	<a href="#">NP_055944</a> <a href="#">Entrez Gene 23157 Human</a> <a href="#">Q14141</a>



[View online »](#)

**Background:**

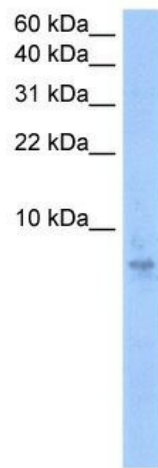
This gene is a member of the septin family of GTPases. Members of this family are required for cytokinesis. One version of pediatric acute myeloid leukemia is the result of a reciprocal translocation between chromosomes 11 and X, with the breakpoint associated with the genes encoding the mixed-lineage leukemia and septin 2 proteins. This gene encodes four transcript variants encoding three distinct isoforms. An additional transcript variant has been identified, but its biological validity has not been determined. [provided by RefSeq, Jul 2008]

**Synonyms:**

SEP2; SEPT2

**Note:**

Immunogen Sequence Homology: Dog: 100%; Pig: 100%; Rat: 100%; Horse: 100%; Human: 100%; Mouse: 100%; Bovine: 100%; Rabbit: 100%; Guinea pig: 100%; Zebrafish: 79%

**Product images:**

WB Suggested Anti-SEPT6 antibody titration: 0.2-1ug/mL; Positive control: Jurkat cell lysate.