

## Product datasheet for **TA339321**

### SWAP70 Rabbit Polyclonal Antibody

#### Product data:

Product Type:	Primary Antibodies
Applications:	WB
Recommended Dilution:	WB
Reactivity:	Human
Host:	Rabbit
Isotype:	IgG
Clonality:	Polyclonal
Immunogen:	The immunogen for anti-SWAP70 antibody: synthetic peptide directed towards the N terminal of human SWAP70. Synthetic peptide located within the following region: ALEEHFRDDDEGPVSNQGYMPYLNRFLEKVDNFDKIEFNRMCTLCVK
Formulation:	Liquid. Purified antibody supplied in 1x PBS buffer with 0.09% (w/v) sodium azide and 2% sucrose. <i>Note that this product is shipped as lyophilized powder to China customers.</i>
Concentration:	lot specific
Purification:	Protein A purified
Conjugation:	Unconjugated
Storage:	Store at -20°C as received.
Stability:	Stable for 12 months from date of receipt.
Predicted Protein Size:	69 kDa
Gene Name:	SWAP switching B-cell complex 70kDa subunit
Database Link:	<a href="#">NP_055870</a> <a href="#">Entrez Gene 23075 Human</a> <a href="#">Q9UH65</a>
Background:	Phosphatidylinositol 3,4,5-trisphosphate-dependent guanine nucleotide exchange factor (GEF) which, independently of RAS, transduces signals from tyrosine kinase receptors to RAC. SWAP70 also mediates signaling of membrane ruffling. It regulates the actin cytoskeleton as an effector or adapter protein in response to agonist stimulated phosphatidylinositol (3,4)-bisphosphate production and cell protrusion.

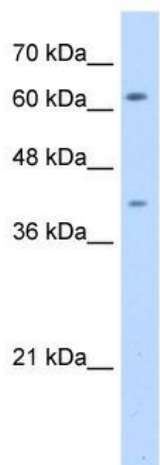


[View online »](#)

**Synonyms:** HSPC321; SWAP-70

**Note:** Immunogen Sequence Homology: Dog: 100%; Pig: 100%; Rat: 100%; Horse: 100%; Human: 100%; Mouse: 100%; Bovine: 100%; Rabbit: 100%; Zebrafish: 100%; Guinea pig: 100%

**Product images:**



WB Suggested Anti-SWAP70 Antibody Titration:  
5.0 ug/ml; Positive Control: HepG2 cell lysate