

Product datasheet for **TA339319**

CNAP1 (NCAPD2) Rabbit Polyclonal Antibody

Product data:

Product Type:	Primary Antibodies
Applications:	WB
Recommended Dilution:	WB
Reactivity:	Human
Host:	Rabbit
Isotype:	IgG
Clonality:	Polyclonal
Immunogen:	The immunogen for anti-NCAPD2 antibody: synthetic peptide directed towards the C terminal of human NCAPD2. Synthetic peptide located within the following region: KAIIDFEQKLRACHTRGLDGIKEIGQAGSQRAPSAKKPSTGSRYPQL
Formulation:	Liquid. Purified antibody supplied in 1x PBS buffer with 0.09% (w/v) sodium azide and 2% sucrose.
Concentration:	lot specific
Purification:	Protein A purified
Conjugation:	Unconjugated
Storage:	Store at -20°C as received.
Stability:	Stable for 12 months from date of receipt.
Predicted Protein Size:	157 kDa
Gene Name:	non-SMC condensin I complex subunit D2
Database Link:	NP_055680 Entrez Gene 9918 Human Q15021
Background:	NCAPD2 is the regulatory subunit of the condensin complex, a complex required for conversion of interphase chromatin into mitotic-like condense chromosomes. The condensin complex probably introduces positive supercoils into relaxed DNA in the presence of type I topoisomerases and converts nicked DNA into positive knotted forms in the presence of type II topoisomerases. NCAPD2 may target the condensin complex to DNA via its C-terminal domain.

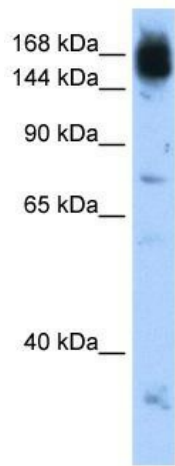


[View online »](#)

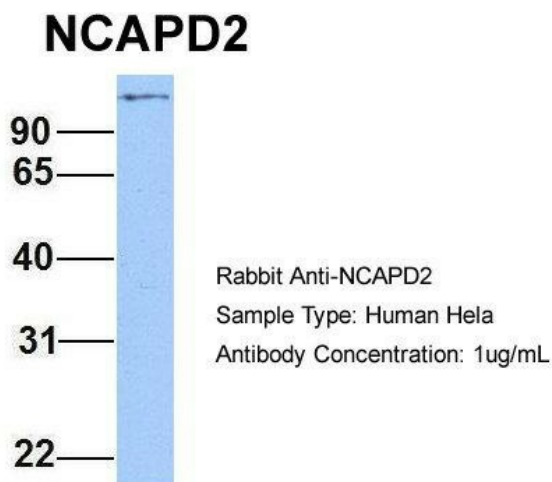
Synonyms: CAP-D2; CNAP1; hCAP-D2

Note: Immunogen Sequence Homology: Human: 100%; Horse: 93%; Pig: 92%; Rabbit: 92%; Dog: 79%

Product images:



WB Suggested Anti-NCAPD2 Antibody Titration:
0.2-1 ug/ml; Positive Control: Jurkat cell lysate



Host: Rabbit; Target Name: NCAPD2; Sample
Tissue: Hela; Antibody Dilution: 1.0
ug/ml. NCAPD2 is supported by BioGPS gene
expression data to be expressed in HeLa