

## Product datasheet for **TA339315**

### Malectin (MLEC) Rabbit Polyclonal Antibody

#### Product data:

Product Type:	Primary Antibodies
Applications:	WB
Recommended Dilution:	WB
Reactivity:	Human
Host:	Rabbit
Isotype:	IgG
Clonality:	Polyclonal
Immunogen:	The immunogen for anti-KIAA0152 antibody: synthetic peptide directed towards the C terminal of human KIAA0152. Synthetic peptide located within the following region: TVDDVPKLQHPGLEKKEEEEEEEYDEGSNLKKQTNKNRVQSGPRTPNP
Formulation:	Liquid. Purified antibody supplied in 1x PBS buffer with 0.09% (w/v) sodium azide and 2% sucrose. <i>Note that this product is shipped as lyophilized powder to China customers.</i>
Concentration:	lot specific
Purification:	Protein A purified
Conjugation:	Unconjugated
Storage:	Store at -20°C as received.
Stability:	Stable for 12 months from date of receipt.
Predicted Protein Size:	32 kDa
Gene Name:	malectin
Database Link:	<a href="#">NP_055545</a> <a href="#">Entrez Gene 9761 Human Q14165</a>
Background:	Carbohydrate-binding protein with a strong ligand preference for Glc2-N-glycan. May play a role in the early steps of protein N-glycosylation.
Synonyms:	KIAA0152

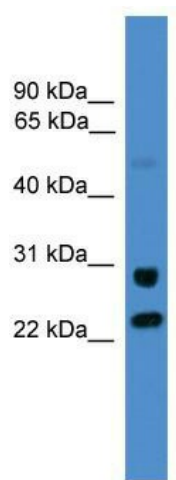


[View online »](#)

**Note:** Immunogen Sequence Homology: Dog: 100%; Pig: 100%; Rat: 100%; Horse: 100%; Human: 100%; Mouse: 100%; Bovine: 100%; Rabbit: 100%; Zebrafish: 93%

**Protein Families:** Transmembrane

**Product images:**



WB Suggested Anti-KIAA0152 Antibody Titration: 0.2-1 ug/ml; ELISA Titer: 1: 312500; Positive Control: 721\_B cell lysate. MLEC is strongly supported by BioGPS gene expression data to be expressed in Human 721\_B cells