

## Product datasheet for **TA339308**

### **NUP62 Rabbit Polyclonal Antibody**

#### **Product data:**

Product Type:	Primary Antibodies
Applications:	IF, WB
Recommended Dilution:	WB, IF
Reactivity:	Human
Host:	Rabbit
Isotype:	IgG
Clonality:	Polyclonal
Immunogen:	The immunogen for anti-NUP62 antibody: synthetic peptide directed towards the N terminal of human NUP62. Synthetic peptide located within the following region: SGFNFGGTGAPTGGFTFGTAKTATTTTPATGFSFSTSGTGGFNFGAPFQPA
Formulation:	Liquid. Purified antibody supplied in 1x PBS buffer with 0.09% (w/v) sodium azide and 2% sucrose. <i>Note that this product is shipped as lyophilized powder to China customers.</i>
Concentration:	lot specific
Purification:	Protein A purified
Conjugation:	Unconjugated
Storage:	Store at -20°C as received.
Stability:	Stable for 12 months from date of receipt.
Predicted Protein Size:	53 kDa
Gene Name:	nucleoporin 62kDa
Database Link:	<a href="#">NP_036478</a> <a href="#">Entrez Gene 23636 Human</a> <a href="#">P37198</a>



[View online »](#)

**Background:**

The nuclear pore complex is a massive structure that extends across the nuclear envelope, forming a gateway that regulates the flow of macromolecules between the nucleus and the cytoplasm. Nucleoporins are the main components of the nuclear pore complex in eukaryotic cells. The protein encoded by this gene is a member of the FG-repeat containing nucleoporins and is localized to the nuclear pore central plug. This protein associates with the importin alpha/beta complex which is involved in the import of proteins containing nuclear localization signals. Multiple transcript variants of this gene encode a single protein isoform. [provided by RefSeq, Jul 2008]

**Synonyms:**

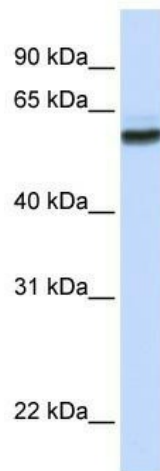
IBSN; p62; SNDI

**Note:**

Immunogen Sequence Homology: Dog: 100%; Pig: 100%; Rat: 100%; Human: 100%; Mouse: 100%; Guinea pig: 100%

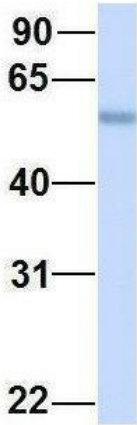
**Protein Families:**

Druggable Genome, Transcription Factors

**Product images:**

WB Suggested Anti-NUP62 Antibody Titration:  
0.2-1 ug/ml; ELISA Titer: 1: 312500; Positive  
Control: Human brain

# NUP62



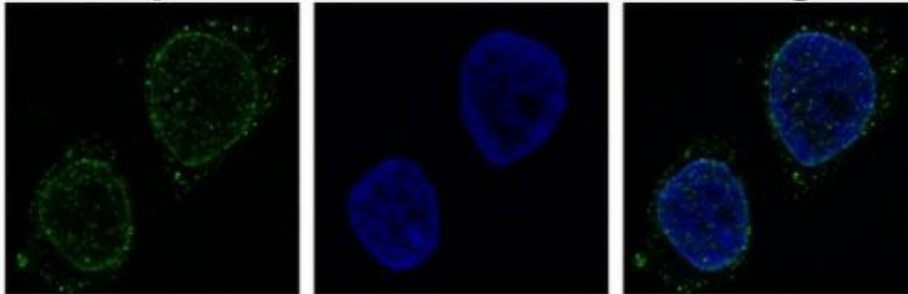
Rabbit Anti-NUP62  
Sample Type: Human Fetal Lung  
Antibody Concentration: 1ug/mL

Host: Rabbit; Target Name: NUP62; Sample  
Tissue: Human Fetal Lung; Antibody Dilution: 1.0  
ug/ml

**Nup62**

**DAPI**

**Merge**



Sample Type: HeLa cell lysate;