

Product datasheet for **TA339307**

TPX2 Rabbit Polyclonal Antibody

Product data:

Product Type:	Primary Antibodies
Applications:	WB
Recommended Dilution:	WB
Reactivity:	Human, Xenopus
Host:	Rabbit
Isotype:	IgG
Clonality:	Polyclonal
Immunogen:	The immunogen for anti-TPX2 antibody: synthetic peptide directed towards the C terminal of human TPX2. Synthetic peptide located within the following region: LSGSLVQEPFQLATEKRAKERQELEKRMAEVEAQKAQQLLEEARLQEEEQK
Formulation:	Liquid. Purified antibody supplied in 1x PBS buffer with 0.09% (w/v) sodium azide and 2% sucrose. <i>Note that this product is shipped as lyophilized powder to China customers.</i>
Concentration:	lot specific
Purification:	Protein A purified
Conjugation:	Unconjugated
Storage:	Store at -20°C as received.
Stability:	Stable for 12 months from date of receipt.
Predicted Protein Size:	86 kDa
Gene Name:	TPX2, microtubule nucleation factor
Database Link:	NP_036244 Entrez Gene 22974 Human Q9ULW0
Background:	TPX2 binding decreases the size and accessibility of a hydrophobic pocket, adjacent to the ATP site, to inhibitors.
Synonyms:	C20orf1; C20orf2; DIL-2; DIL2; FLS353; GD:C20orf1; HCA519; HCTP4; p100; REPP86

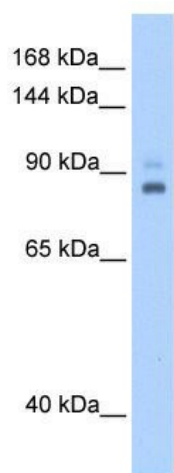


[View online »](#)

Note: Immunogen Sequence Homology: Dog: 100%; Pig: 100%; Rat: 100%; Horse: 100%; Human: 100%; Mouse: 100%; Bovine: 100%; Rabbit: 100%; Guinea pig: 100%

Protein Families: Druggable Genome, Stem cell - Pluripotency

Product images:



WB Suggested Anti-TPX2 Antibody Titration: 0.2-1 ug/ml; Positive Control: 721_B cell lysate. TPX2 is supported by BioGPS gene expression data to be expressed in 721_B