

Product datasheet for **TA339306**

RFC5 Rabbit Polyclonal Antibody

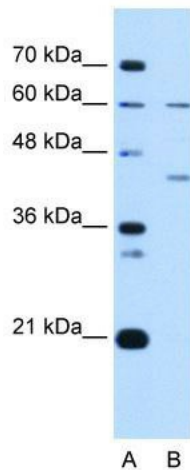
Product data:

Product Type:	Primary Antibodies
Applications:	IHC, WB
Recommended Dilution:	WB, IHC
Reactivity:	Human
Host:	Rabbit
Isotype:	IgG
Clonality:	Polyclonal
Immunogen:	The immunogen for anti-RFC5 antibody: synthetic peptide directed towards the N terminal of human RFC5. Synthetic peptide located within the following region: METSALKQQEQPAATKIRNLPWVEKYRPQTLNDLISHQDILSTIQKFINE
Formulation:	Liquid. Purified antibody supplied in 1x PBS buffer with 0.09% (w/v) sodium azide and 2% sucrose. <i>Note that this product is shipped as lyophilized powder to China customers.</i>
Concentration:	lot specific
Purification:	Protein A purified
Conjugation:	Unconjugated
Storage:	Store at -20°C as received.
Stability:	Stable for 12 months from date of receipt.
Predicted Protein Size:	38 kDa
Gene Name:	replication factor C subunit 5
Database Link:	NP_031396 Entrez Gene 5985 Human P40937

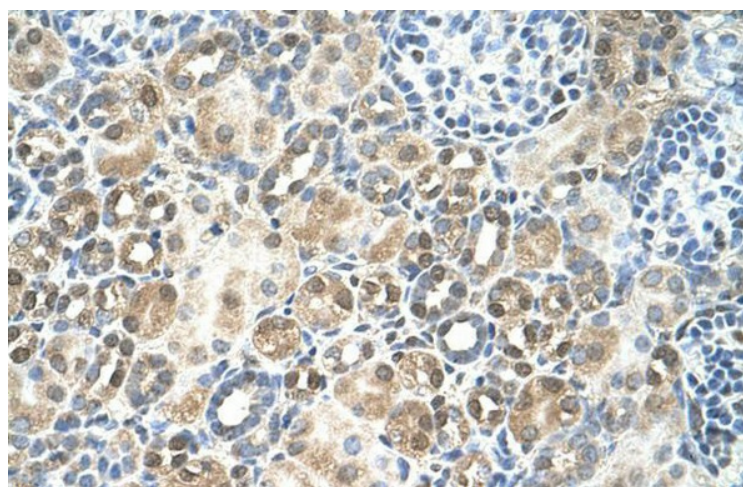


[View online »](#)

- Background:** The elongation of primed DNA templates by DNA polymerase delta and DNA polymerase epsilon requires the accessory proteins proliferating cell nuclear antigen (PCNA) and replication factor C (RFC). RFC, also named activator 1, is a protein complex consisting of five distinct subunits of 140, 40, 38, 37, and 36 kD. This gene encodes the 36 kD subunit. This subunit can interact with the C-terminal region of PCNA. It forms a core complex with the 38 and 40 kDa subunits. The core complex possesses DNA-dependent ATPase activity, which was found to be stimulated by PCNA in an in vitro system. Alternative splicing results in multiple transcript variants. A related pseudogene has been identified on chromosome 9. [provided by RefSeq, May 2011]
- Synonyms:** RFC36
- Note:** Immunogen Sequence Homology: Dog: 100%; Pig: 100%; Rat: 100%; Horse: 100%; Human: 100%; Guinea pig: 100%; Mouse: 93%; Bovine: 93%; Zebrafish: 93%; Yeast: 90%
- Protein Families:** Stem cell - Pluripotency
- Protein Pathways:** DNA replication, Mismatch repair, Nucleotide excision repair
- Product images:**



WB Suggested Anti-RFC5 Antibody Titration: 1 ug/ml; Positive Control: Jurkat cell lysate. RFC5 is strongly supported by BioGPS gene expression data to be expressed in Human Jurkat cells



Human kidney